

UUEL  
KONAKOVO

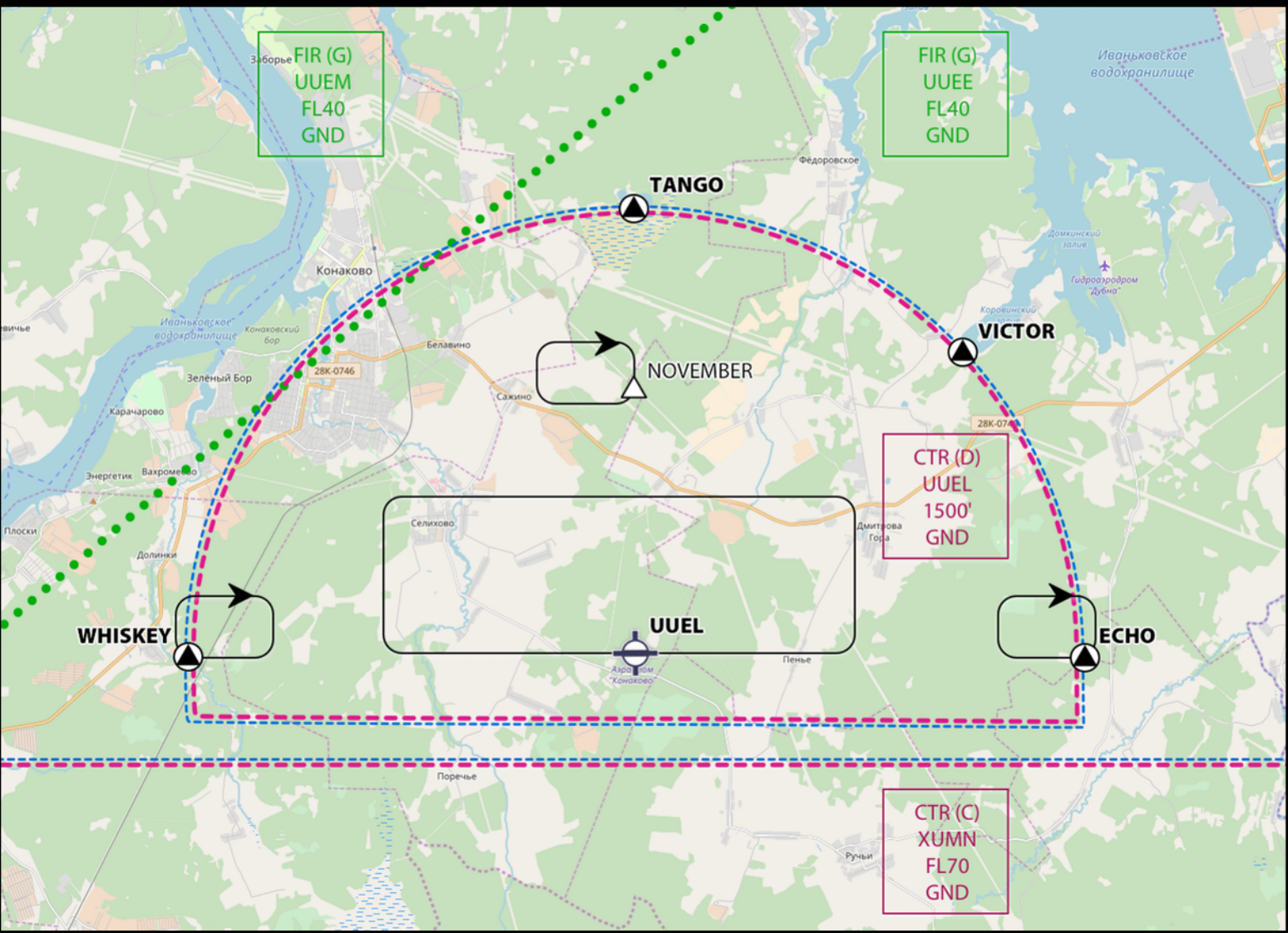
KONAKOVO  
RUSSIA

LOCATION  
Elev 469' /143m  
N56.38 E036.53

FIS  
SHEREMETYEVO APP 123.700

ATIS  
UUEE 125.125

TOWER  
KONAKOVO 133.100 (en, rus)



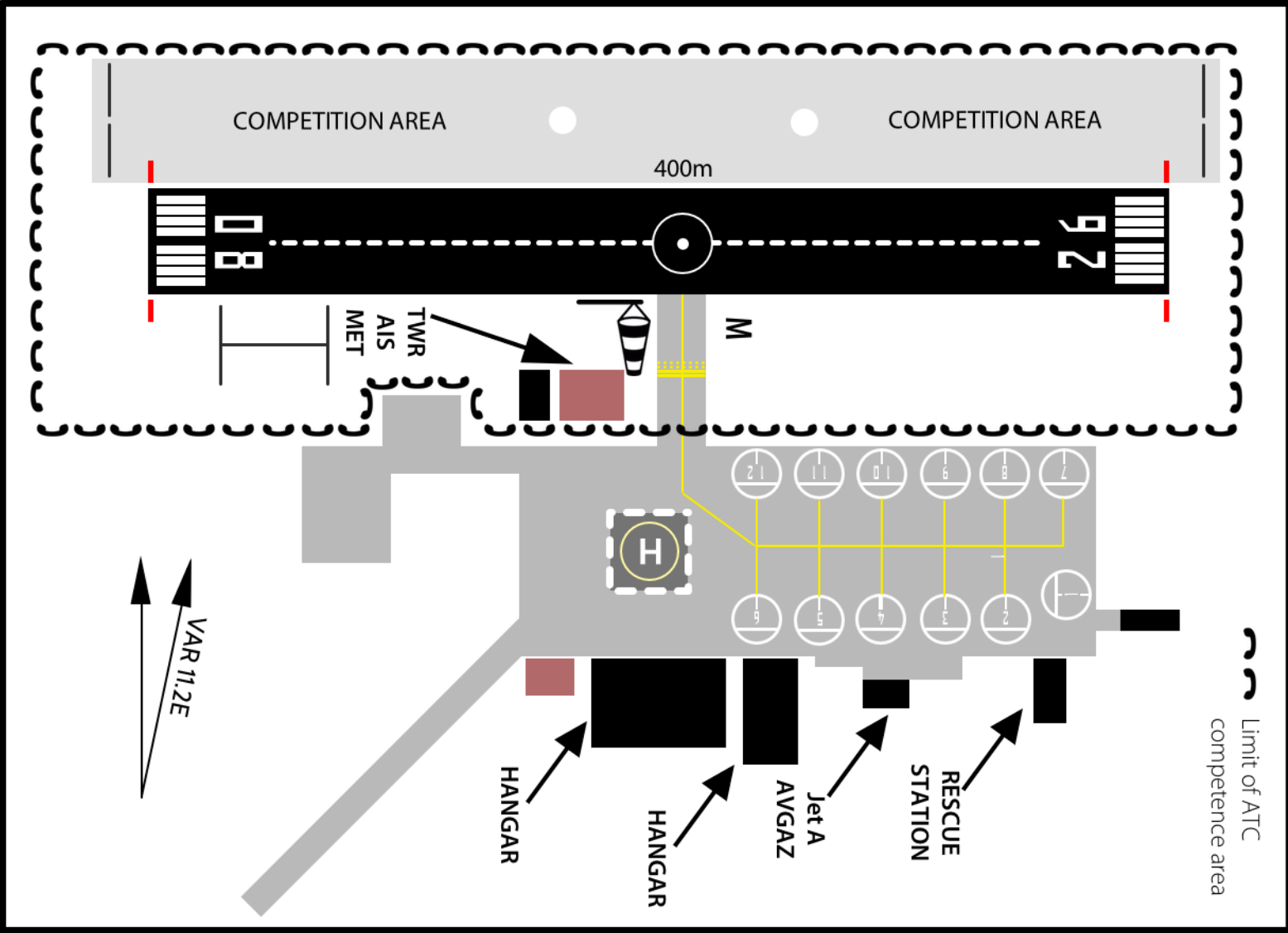
VAR 11.2E

UUEL  
KONAKOVO

KONAKOVO  
RUSSIA

LOCATION	FIS	ATIS
Elev 469' / 163m N56.38 E036.53	SHEREMETYEVO APP 123.700	UUEE 125.125

TOWER	GROUND
KONAKOVO 133.100 (en, rus)	KONAKOVO 133.100 (en, rus)



VAR 11.2E

**Procedures for TKOF/LDG of HELs**

TKOF/LDG of HELs take place on the RWY.

HELs with skid undercarriage are to use all normal TWYs as air TWYs.

**Procedures for VFR flights within Konakovo CTR**

Plan CTR entry and exit only via REPs WHISKEY, TANGO, VICTOR or ECHO.

**Communication Failure**

ACFT outside controlled ASP experiencing COM failure and which have not received clearance, should land at AD outside the control zone.

**ATC Clearance**

Obtain ATC clearance from "Konakovo Delivery" on 133,1. Report information ATIS on initial contact.

**Fuel facilities**

Jet A-1  
AVGAZ

**Administration**

Office: +79162412078  
ATS: +79157405431, +79261540109

**Operational hours**

06:00 - 18:00 LOCAL TIME

**Web-Site**

<http://www.konakovo.aero>

**Infrastructure**

Hotel, parking, restaurant (see operational hours).

**RWY**

400x19 meters, asphalt, 08/26, for day flights only.