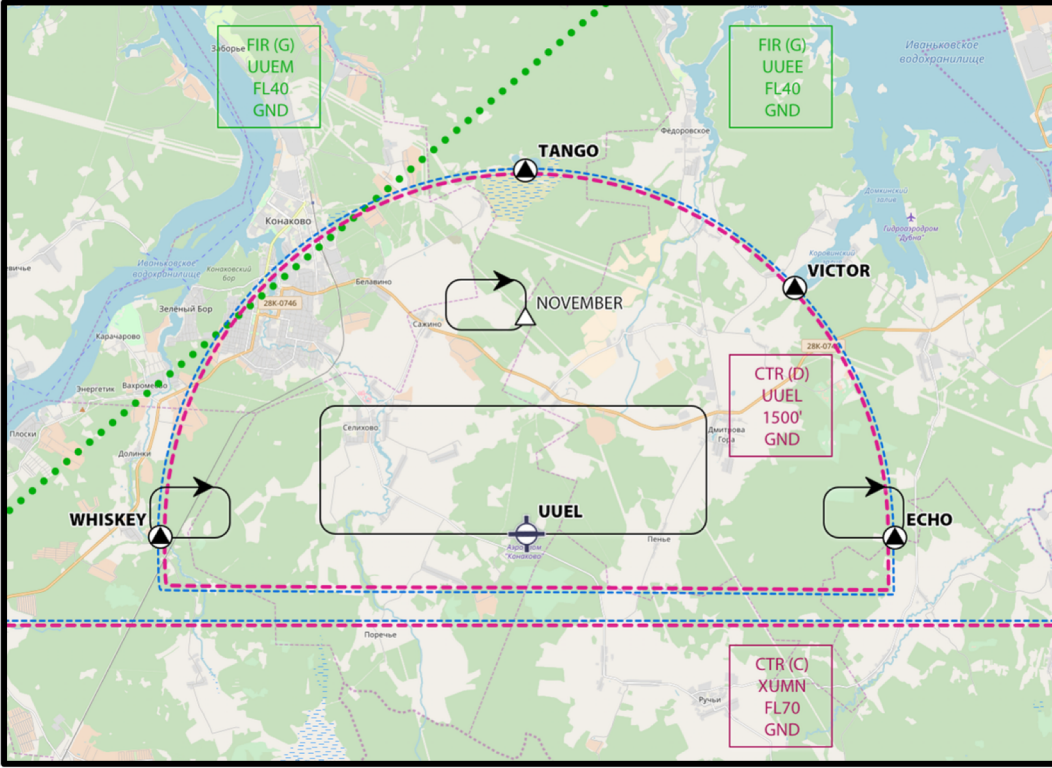




Порядок выполнения УТП



UUEL KONAKOVO RUSSIA		
LOCATION Elev 469' / 163m N56.38 E036.53	FIS SHEREMETYEVO APP 123.700	ATIS UUEE 125.125
TOWER KONAKOVO 133.100 (en, rus)		GROUND KONAKOVO 133.100 (en, rus)

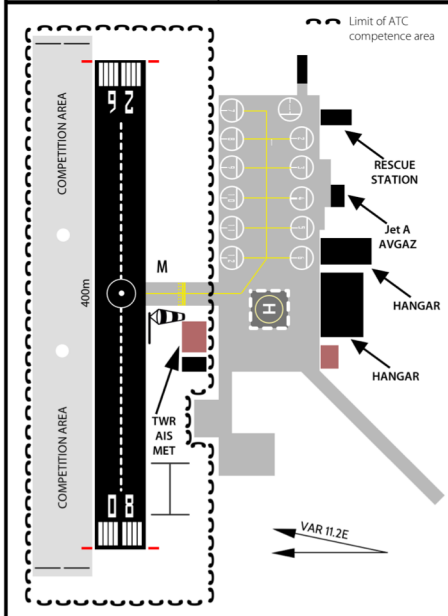
AIRSPACE CLASSIFICATION VFR

- КЛАСС CTR – D (**CONTROLLED AIRSPACE**):
 - SEPARATION: NOT PROVIDED.
 - SERVICES: ATC SERVICE, IFR/VFR AND VFR/VFR TRAFFIC INFORMATION (AND TRAFFIC AVOIDANCE ON REQUEST).
- VMC MINIMA:
- SPEED LIMITATION: 250 KT IAS BELOW FL100.
- RADIO: CONTINUOUS TWO-WAY.
- ATC CLEARANCE: REQUIRED.

UUEL KONAKOVO

KONAKOVO RUSSIA

LOCATION Elev 469' / 163m N56.38 E036.53	FIS SHEREMETYEVO APP 123.700	ATIS UUEE 125.125
TOWER KONAKOVO 133.100 (en, rus)	GROUND KONAKOVO 133.100 (en, rus)	



UUEL KONAKOVO

KONAKOVO RUSSIA

Procedures for TKOF/LDG of HELS

TKOF/LDG of HELS take place on the RWY.
HELs with skid undercarriage are to use all normal TWYs as air TWYs.

Procedures for VFR flights within Konakovo CTR

Plan CTR entry and exit only via REPs WHISKEY, TANGO, VICTOR or ECHO.

Communication Failure

ACFT outside controlled ASP experiencing COM failure and which have not received clearance, should land at AD outside the control zone.

ATC Clearance

Obtain ATC clearance from "Konakovo Delivery" on 133,1. Report information ATIS on initial contact.

Fuel facilities

Jet A-1
AVGAZ

Administration

Office: +79162412078
ATS: +79157405431, +79261540109

Operational hours

06:00 - 18:00 LOCAL TIME

Web-Site

<http://www.konakovo.aero>

Infrastructure

Hotel, parking, restaurant (see operational hours).

RWY

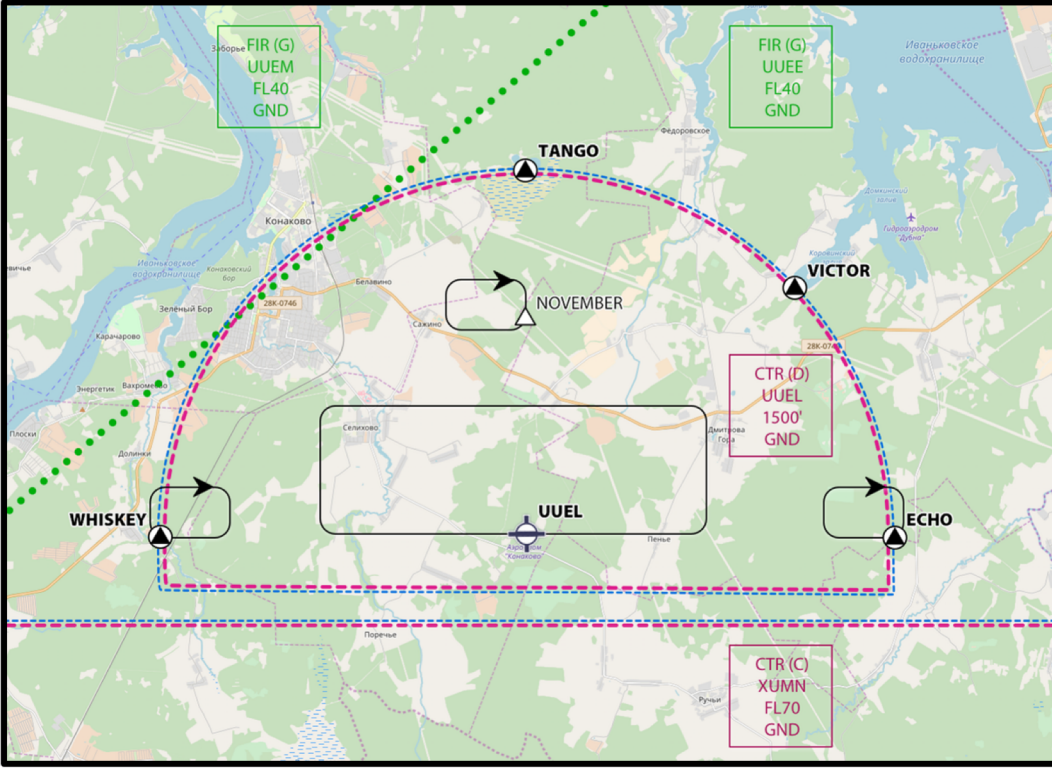
400x19 meters, asphalt, 08/26, for day flights only.

UUEL KONAKOVO RUSSIA

LOCATION Elev 469' / 163m N56.38 E036.53	FIS SHEREMETYEVO APP 123.700	ATIS UUEE 125.125
TOWER KONAKOVO 133.100 (en, rus)	GROUND KONAKOVO 133.100 (en, rus)	

STANDARD PROCEDURES

1. Check ATIS.
2. Receive ATC clearance and readback.
3. Receive Start-Up clearance.
4. Request taxi instructions.
5. Report ready for departure.
6. Take-off and follow ATC clearance.
7. Leave Control zone as cleared.
8. Request transition and cross Control zone.
9. Leave Control zone as cleared.
10. Check ATIS.
11. Request entering Control zone and landing.
12. Land at airfield, air taxi to apron and leave FRQ.



UUEL KONA KOVO RUSSIA		
LOCATION Elev 469' / 163m N56.38 E036.53	FIS SHEREMETYEVO APP 123.700	ATIS UUEE 125.125
TOWER KONA KOVO 133.100 (en, rus)		GROUND KONA KOVO 133.100 (en, rus)

EMERGENCY PROCEDURES

1. Check ATIS.
2. Receive ATC clearance and readback.
3. Receive Start-Up clearance.
4. Request taxi instructions.
5. Report ready for departure.
6. Take-off and follow ATC clearance.
7. Leave Control zone as cleared.
8. Request transition.
9. Report abnormal situation and request precautionary landing.
10. Take-off and report normal flight.
11. Leave Control zone as cleared.
12. Check ATIS.
13. Request entering Control zone and landing.
14. Report MAYDAY FUEL.
15. Land at airfield, air taxi to apron and leave FRQ.