

Briefing Pack

UUEE UUOO EOBT 2017-04-13 11:00Z



Generated 2017-04-13 10:02Z

www.autorouter.eu

Contents

1	Flight Briefing	1
1.1	Overview	1
1.2	PLOG	2
2	Meteo Briefing	3
2.1	MSLP	3
2.1.1	MSLP 2017-04-13 06:00Z	3
2.1.2	MSLP 2017-04-13 12:00Z	4
2.1.3	MSLP 2017-04-13 18:00Z	5
2.2	SIGWX Europe	6
2.2.4	SIGWX Europe 2017-04-13 06:00Z	6
2.2.5	SIGWX Europe 2017-04-13 12:00Z	7
2.2.6	SIGWX Europe 2017-04-13 18:00Z	8
2.3	TEMSI Europe	9
2.3.7	TEMSI Europe 2017-04-13 09:00Z	9
2.3.8	TEMSI Europe 2017-04-13 12:00Z	10
2.4	GRAMET	11
2.5	Predicted Skew-T Diagrams	13
2.6	METAR/TAF/SIGMET	14
2.7	Radio Soundings	15
3	Mass & Balance	17
3.1	Mass & Balance	17
3.2	Fuel Planning	18
3.3	Distances	18
3.4	Climb	18
3.5	Descent	19
4	ATC Briefing	21
4.1	Addressing	21
4.2	NOTAM	21
4.3	ICAO Flight Plan Form	33
A	Additional NOTAM	34

1 Flight Briefing

1.1 Overview

DEP	UUEE SHERMETYEVO 5558N03725E
DEST	UUOO VORONEZH 5149N03914E
EOBT	2017-04-13 11:00Z
ACFT	ZZZZZ Piper PA28R-200 1971
ROUTE	N0122F130 DMD/N0122F130 IFR DCT US/N0110F040 DCT IWV VFR
DIST	258.9NM (GC 258.0NM)
ALT	F130
FLTTIME	02:30
TRIPFUEL	21.7usg
ENDURANCE	05:59
LINKS	Map SkyVector Garmin Pilot

Place	Time	SR	SS	Civil Twilight		Elev	Comments
UUEE SHEREMETYEVO	11:10	02:29	16:33	01:49	17:12	630	GNSS unavailable
UUOO VORONEZH	13:40	02:30	16:17	01:55	16:52	515	

Navigation Log

UUEE SHEREMETYEVO → UUOO VORONEZH

www.autorouter.eu

Dep 2017-04-13 11:10Z DA 301ft Arr 2017-04-13 13:40Z DA 331ft Enroute 02:30

WX: GFS RefTime 2017-04-13 06Z EffTime 2017-04-13 09Z–15Z

ATIS

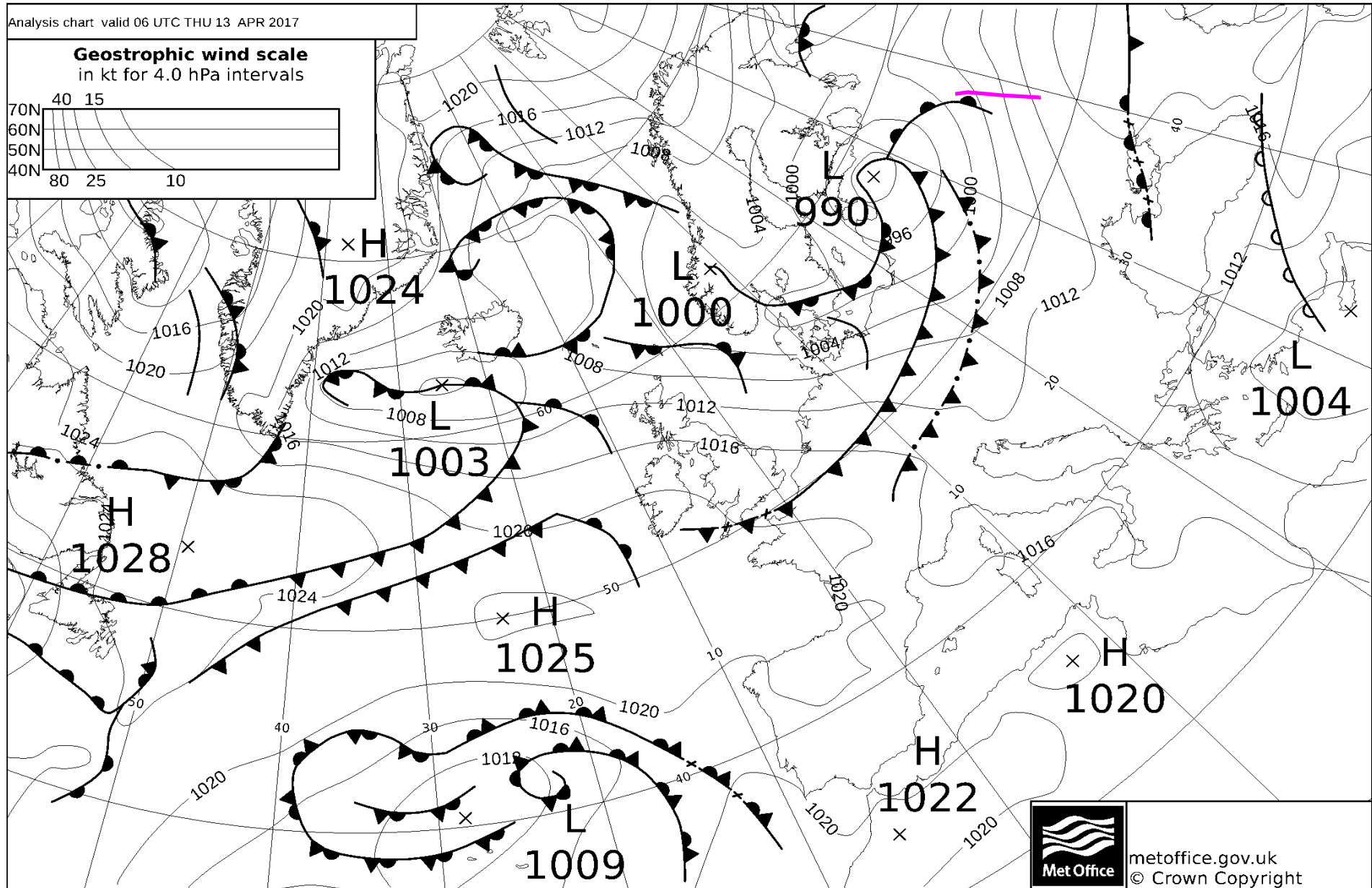
ATC Flightplan

(FPL–ZZZZZ–ZG –P28R/L –SYBDFGR/S –UUEE1100 –N0122F130 DMD/N0122F130 IFR DCT US/N0110F040 DCT IWV VFR –UUOO0229 –DOF/170413 PBN/B2D2 –E/0559 P/TBN R/E A/WHITE BLUE STRIPES)

Clearance

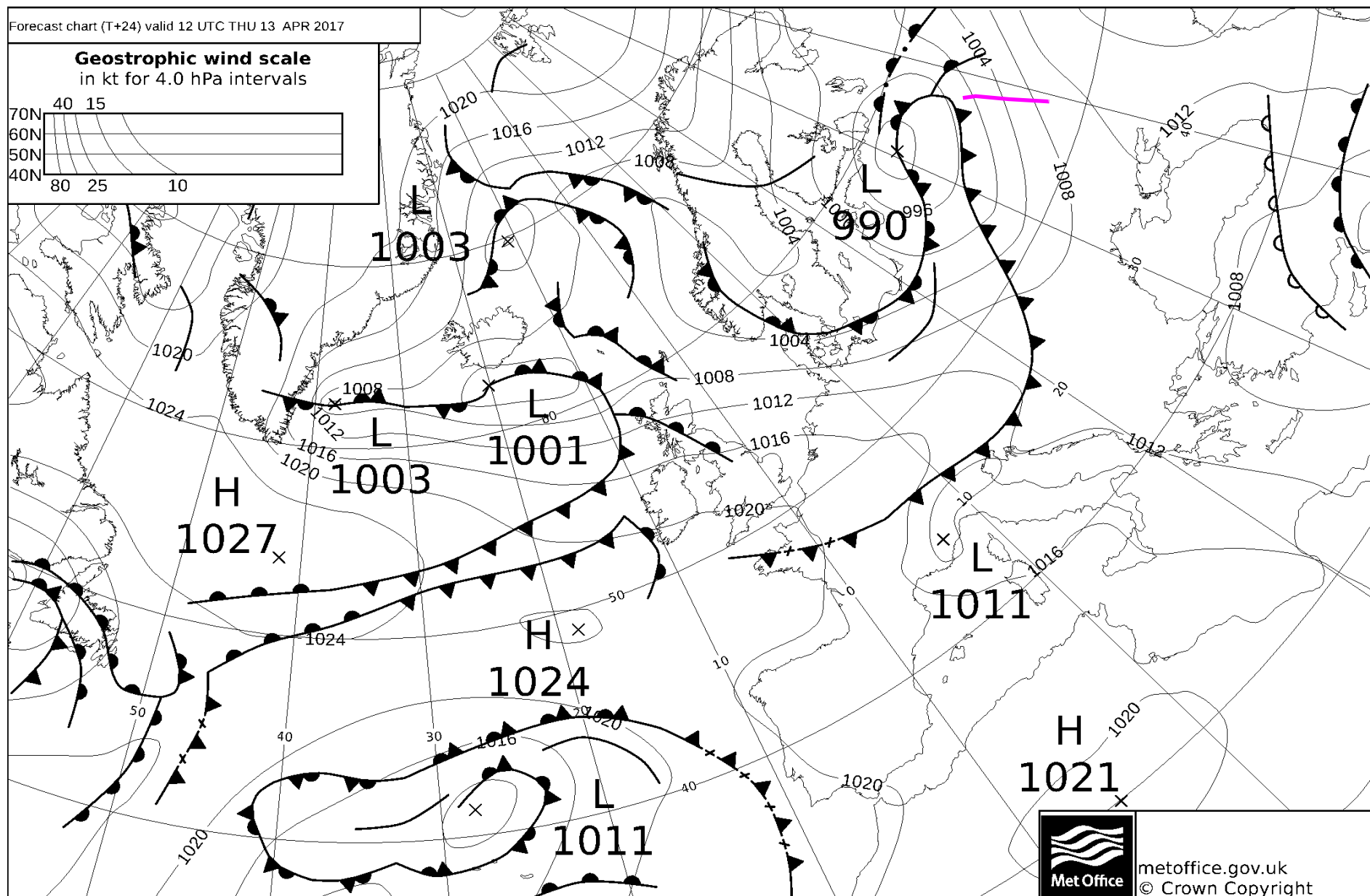
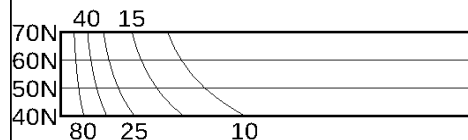
Waypoint Route	Altitude Freq	Latitude Longitude	Dist Fuel	ETA ATA	ETE ATE	MT MH	TT TH	Dist Fuel	GS Terr	TAS RPM/MP	Wind QFF/T
UUEE SHEREM-VFR	630	N55 58.35 E037 24.78	258.9 21.7		02:30 00:17	Enroute		AVGAS USGal			211/17 999/7
TOC VFR	F130	N55 37.59 E037 42.72	235.8 18.6			143 161	154 172	23.1 3.1	(84) 686	(92)	244/38 999/-18
DMD MOSCOW DCT	F130 113.300	N55 23.30 E037 54.87	219.9 17.4		00:08 00:57	143 161	154 172	15.9 1.1	115 686	121 2400/14.9	244/38 1001/-16
US MURAVLYA-DCT	F130 001.025	N53 44.68 E038 29.77	119.0 9.5		00:57	176	187	7.9	577	2400/14.9	245/41 1005/-15
TOD DCT	F130	N52 07.08 E039 06.95	18.7 1.6		00:57 00:11	157 176	167 186	100.3 7.9	105 2400/14.9	121 (98)	245/41 1005/-16
IWV VORONEZH VFR	F040 114.900	N51 49.28 E039 13.43	0.4 0.0		00:11 00:00	158 172	167 182	18.3 1.6	(98)	(117)	1005/-16 215/30
UUOO VORONE-	514	N51 48.90 E039 13.80	-0.0 0.0		00:00	140 151	149 160	0.4 0.0	(94) 531	(108)	1009/2 202/17
											1009/11

2 Meteo Briefing



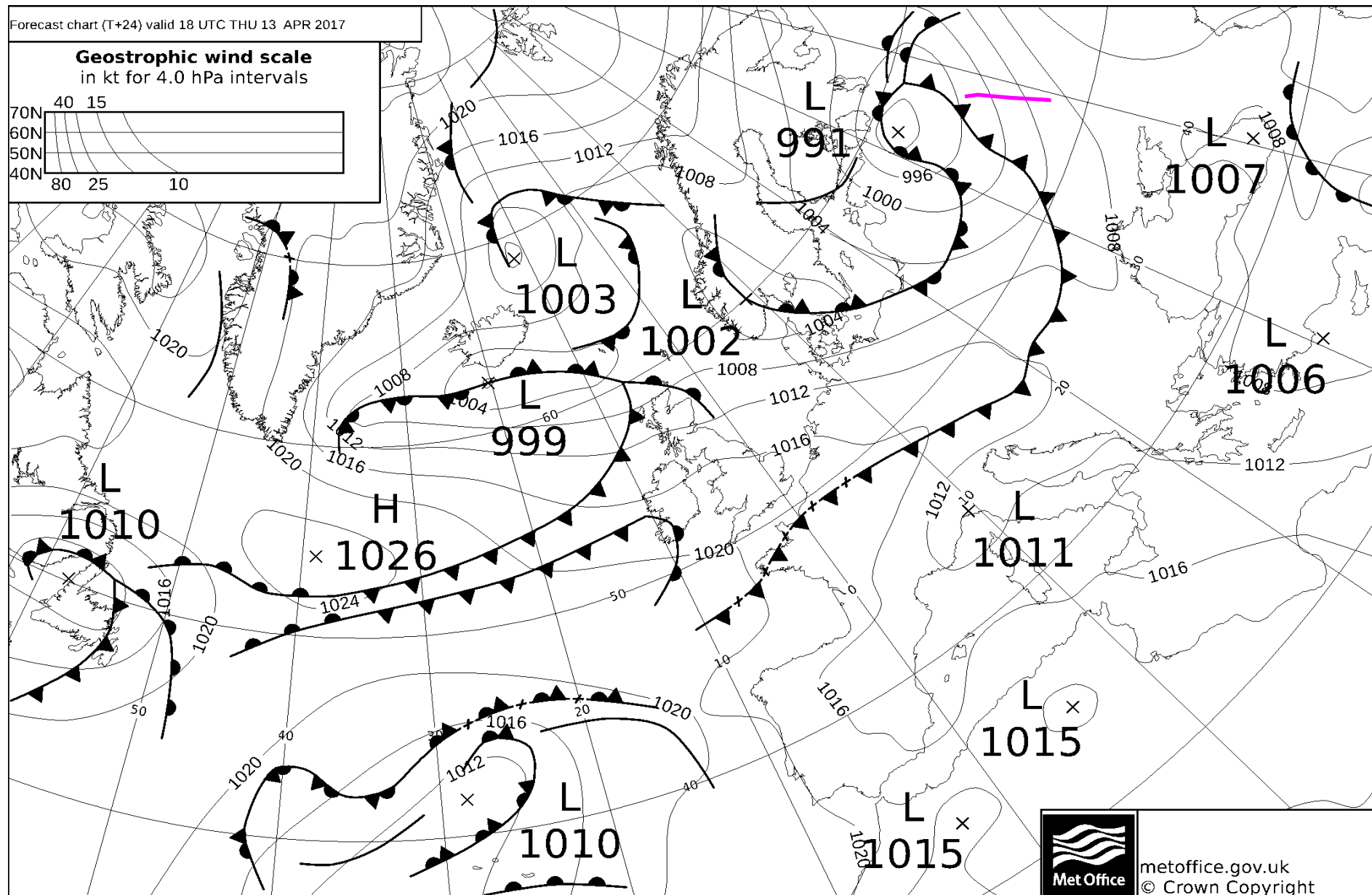
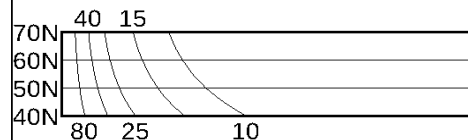
Forecast chart (T+24) valid 12 UTC THU 13 APR 2017

Geostrophic wind scale
in kt for 4.0 hPa intervals



Forecast chart (T+24) valid 18 UTC THU 13 APR 2017

Geostrophic wind scale
in kt for 4.0 hPa intervals



metoffice.gov.uk
© Crown Copyright

PGDE14 EGRR 120600

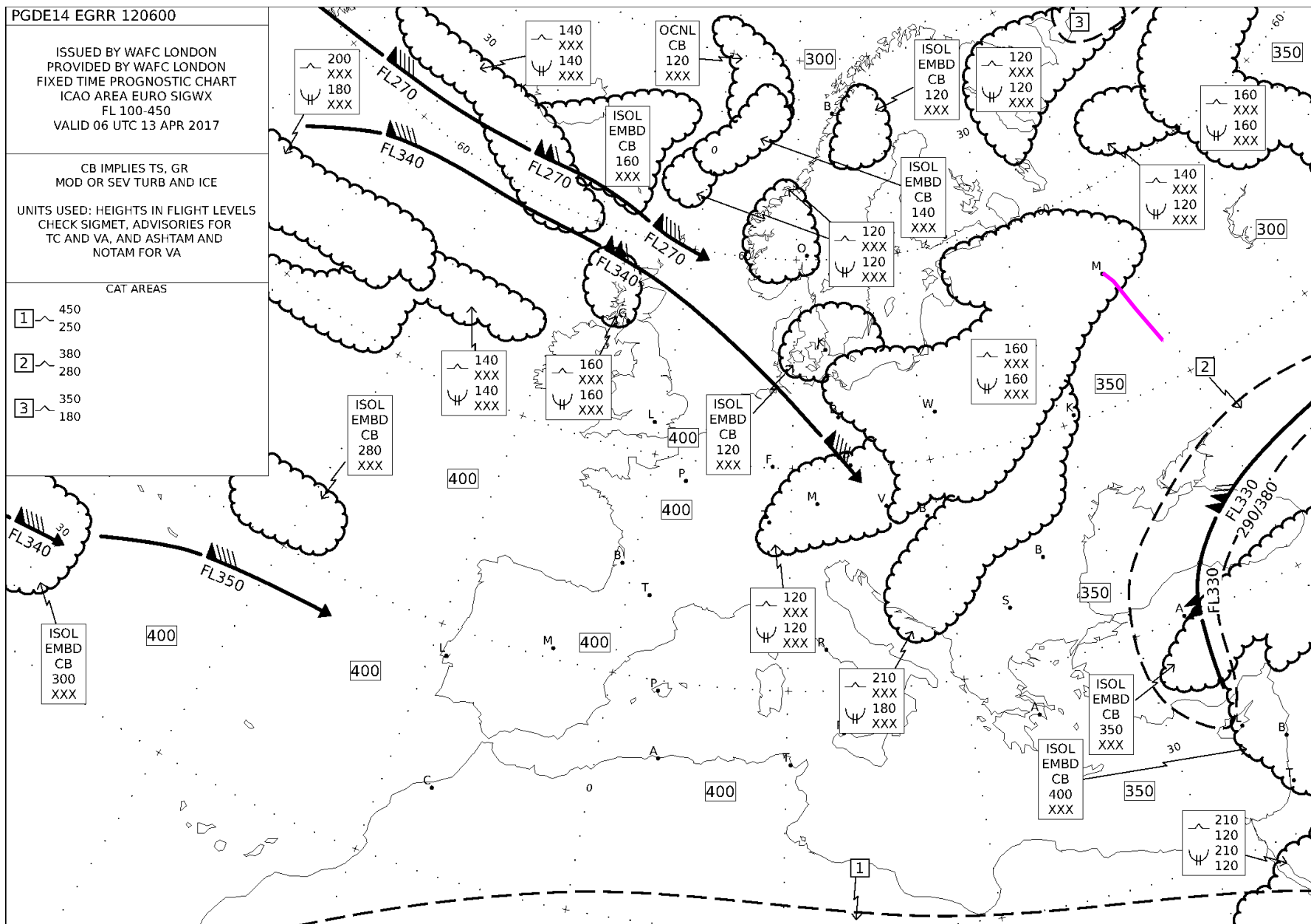
ISSUED BY WAFC LONDON
PROVIDED BY WAFC LONDON
FIXED TIME PROGNOSTIC CHART
ICAO AREA EURO SIGWX
FL 100-450
VALID 06 UTC 13 APR 2017

CB IMPLIES TS, GR
MOD OR SEV TURB AND ICE

UNITS USED: HEIGHTS IN FLIGHT LEVELS
CHECK SIGMET, ADVISORIES FOR
TC AND VA, AND ASHTAM AND
NOTAM FOR VA

CAT AREAS

- 1 450
250
- 2 380
280
- 3 350
180



PGDE14 EGRR 121200

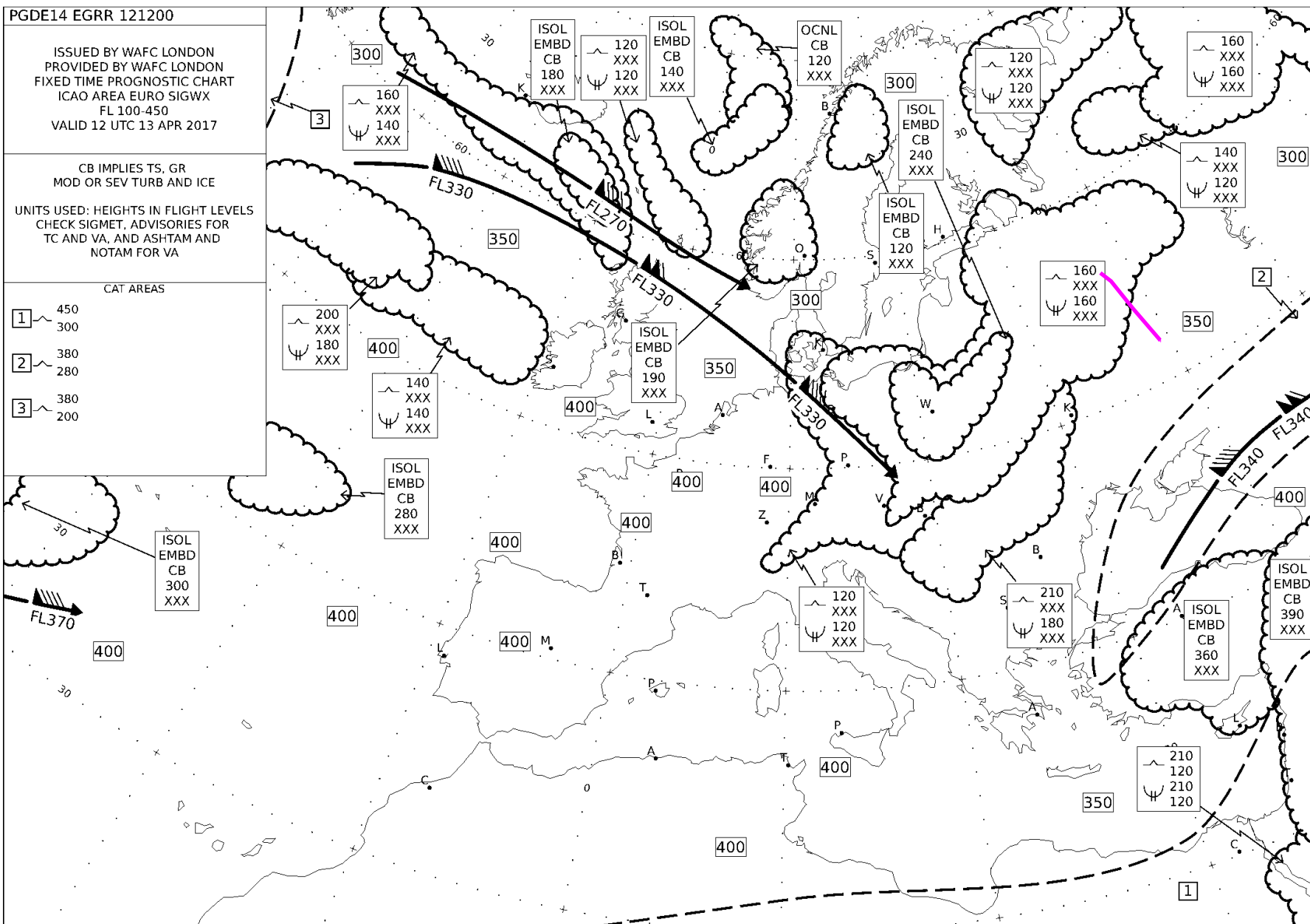
ISSUED BY WAFC LONDON
PROVIDED BY WAFC LONDON
FIXED TIME PROGNOSTIC CHART
ICAO AREA EURO SIGWX
FL 100-450
VALID 12 UTC 13 APR 2017

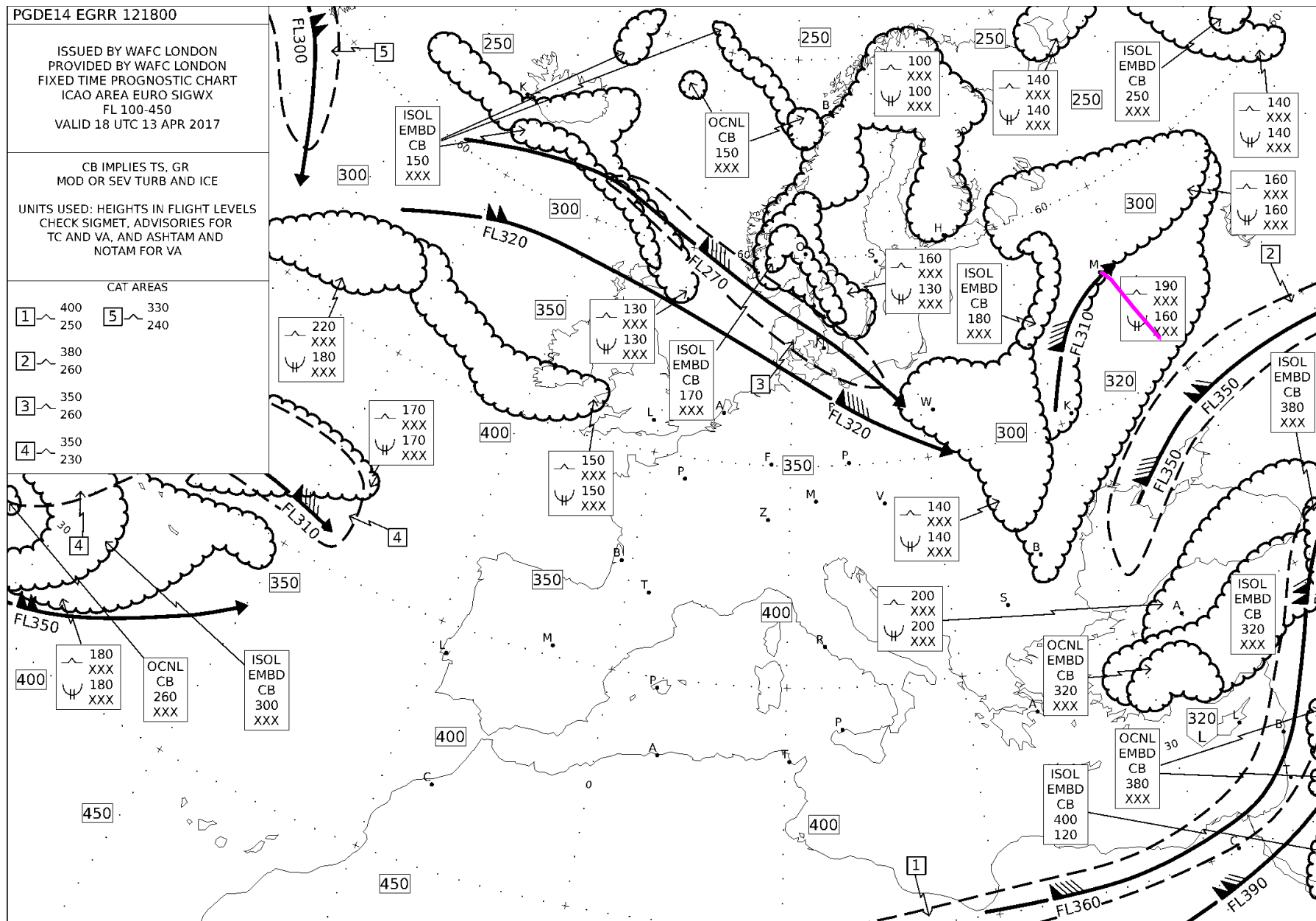
CB IMPLIES TS, GR
MOD OR SEV TURB AND ICE

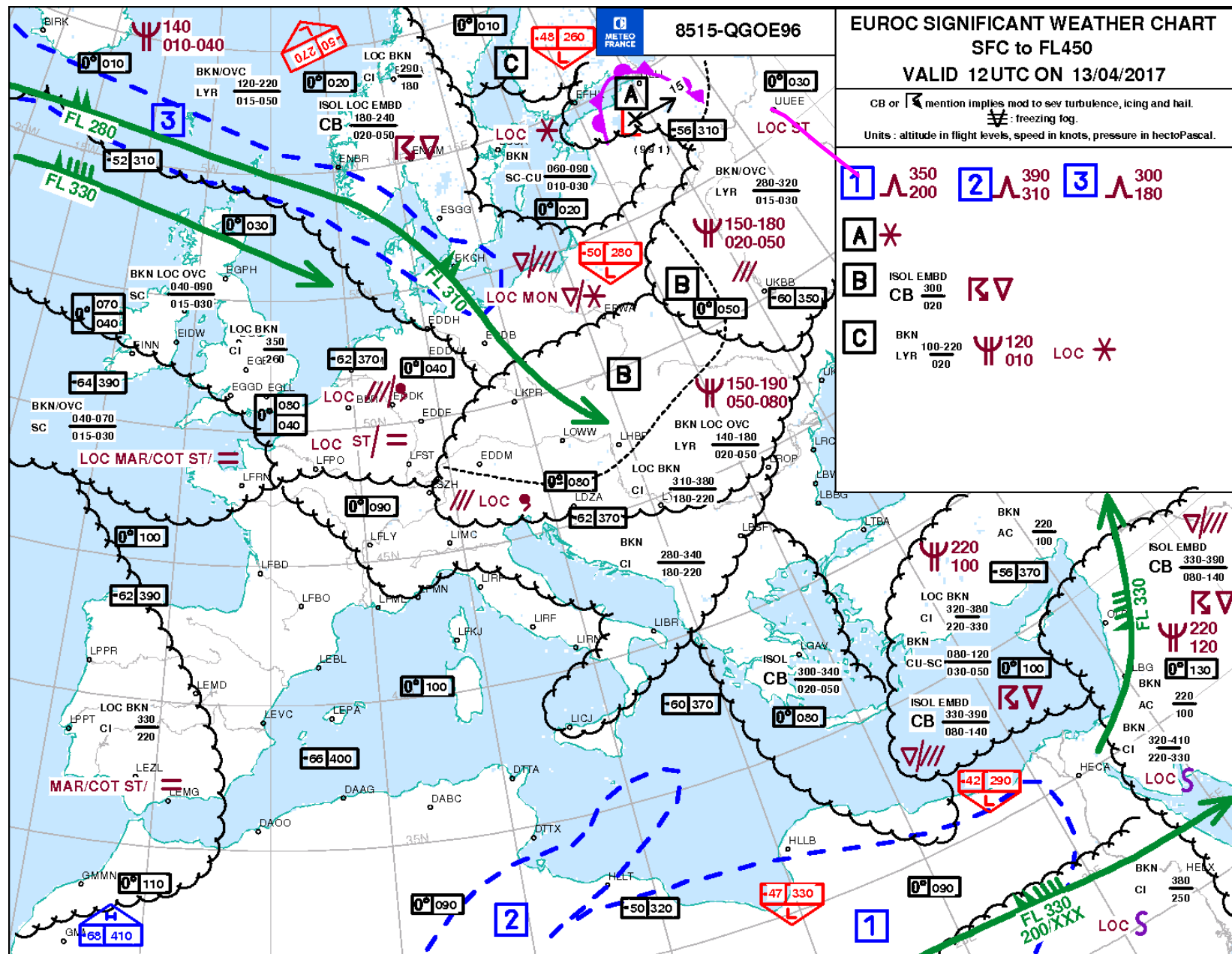
UNITS USED: HEIGHTS IN FLIGHT LEVELS
CHECK SIGMET, ADVISORIES FOR
TC AND VA, AND ASHTAM AND
NOTAM FOR VA

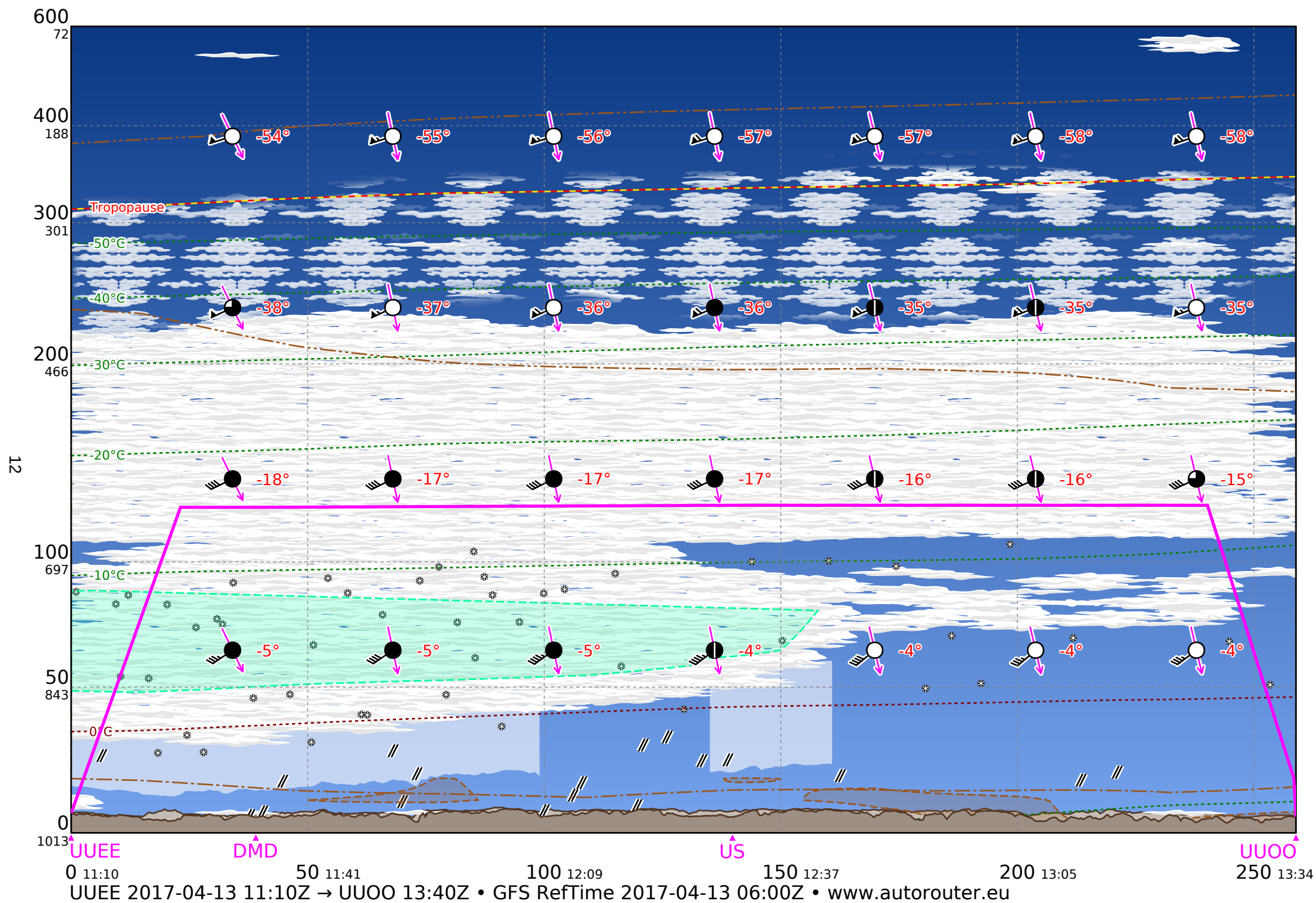
CAT AREAS

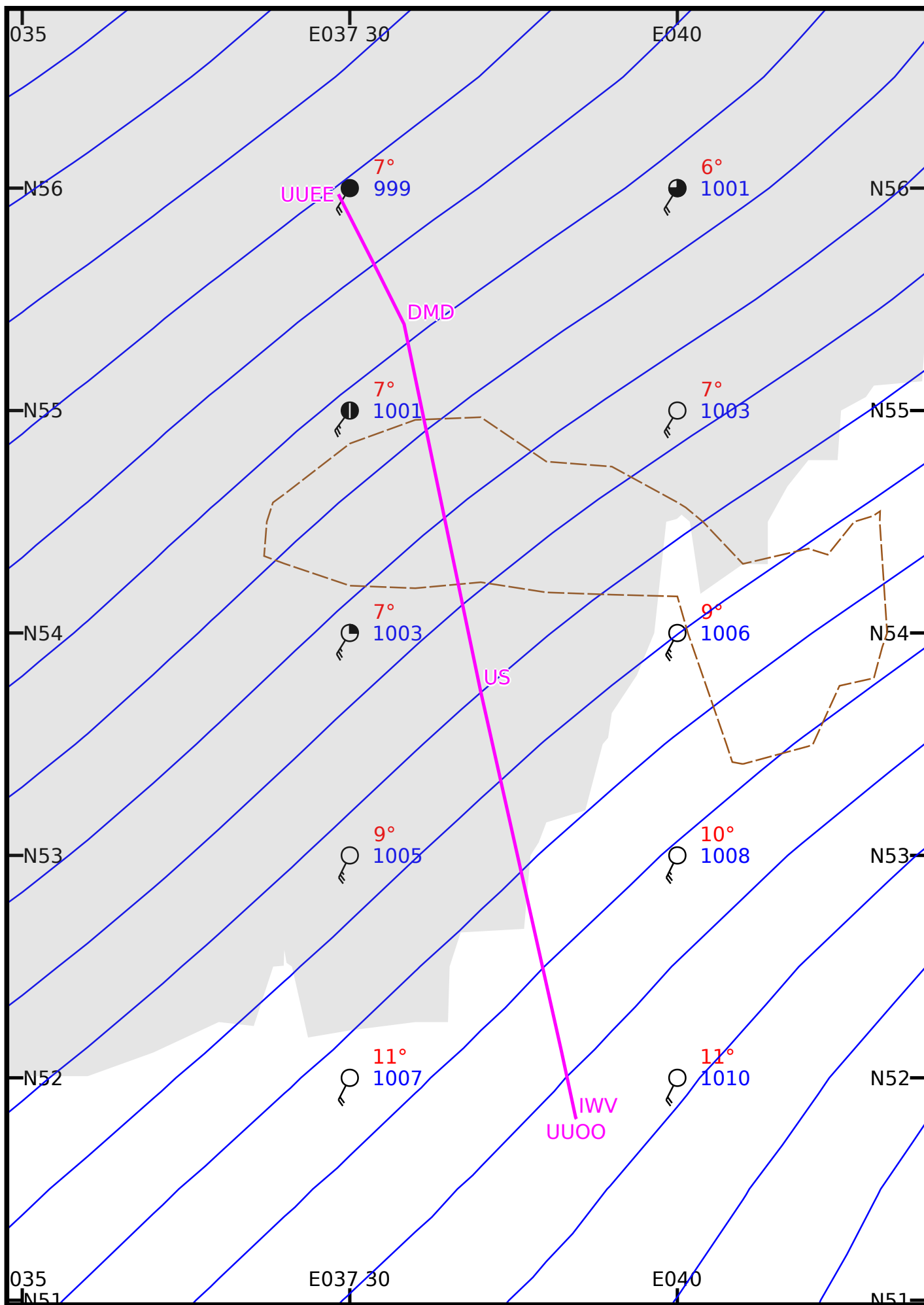
- 1 450
300
- 2 380
280
- 3 380
200





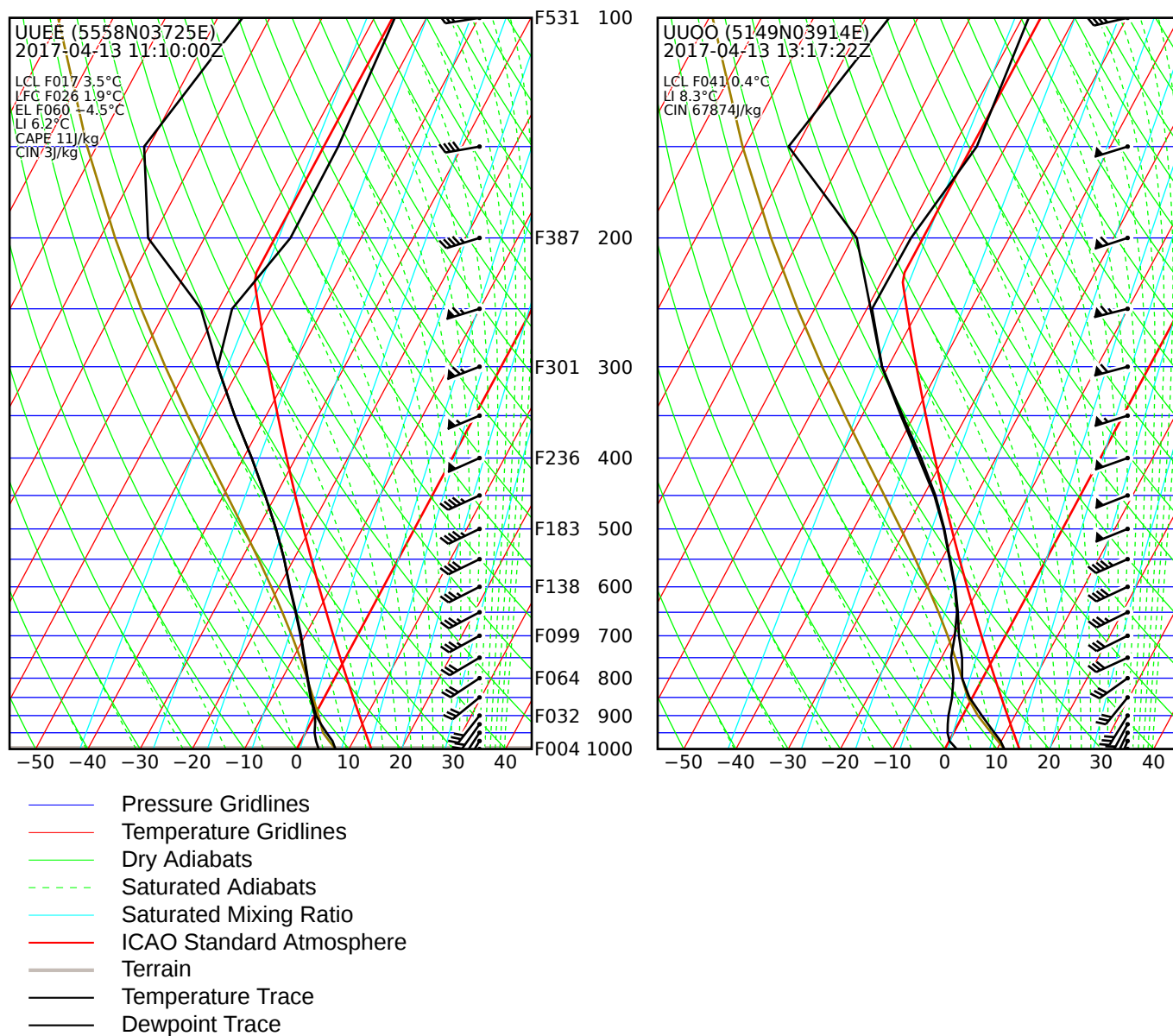




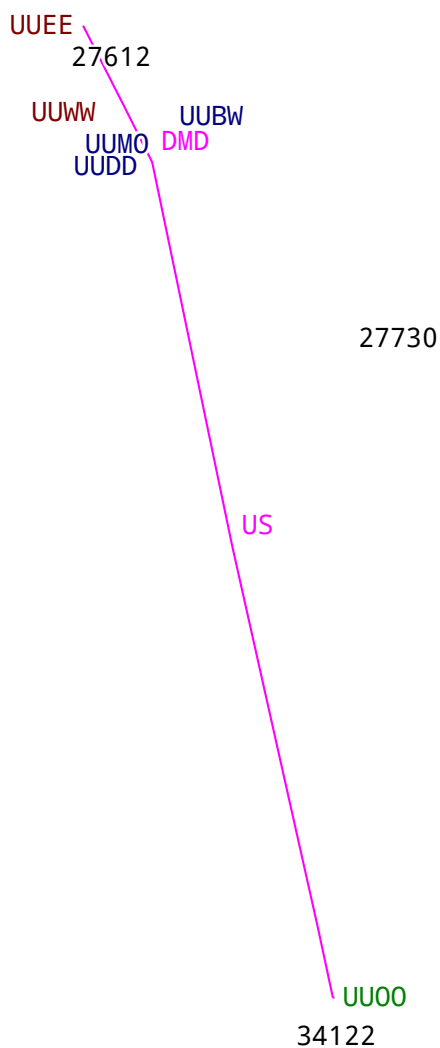


GND • UUEE 2017-04-13 11:10Z → UUOO 13:17Z • GFS RefTime 2017-04-13 06:00Z • www.aut

2.5 Predicted Skew-T Diagrams



2.6 METAR/TAF/SIGMET



Departure

UUEE 130900Z 19006G11MPS 8000 -RA OVC008 04/02 Q1000 R24R/290145 R24L/290151 NOSIG
UUEE 130930Z 18006MPS 9000 -RA OVC009 04/03 Q1000 R24R/290145 R24L/290151 NOSIG
TAF UUEE 130756Z 1309/1409 20007MPS 5000 -RA OVC011 TX06/1315Z TN02/1401Z TEMPO
1309/1318 18013MPS 2500 -SHRA BKN005 BKN012CB BECMG 1405/1407 30007MPS 9000

Destination

UU00 130900Z 19008MPS CAVOK 12/M05 Q1010 R12/090057 TEMPO 22016MPS RMK QFE744
UU00 130930Z 20007MPS CAVOK 12/M06 Q1010 R12/090057 TEMPO 22016MPS RMK QFE743
TAF UU00 130800Z 1309/1318 21009MPS 9999 BKN040 TEMPO 1309/1315 22010G16MPS

Enroute

UUBW 130930Z 19006MPS 9999 -SHRA BKN016CB 05/03 Q1001 R30/110055 NOSIG

TAF UUBW 130757Z 1309/1409 20008MPS 5000 -RA OVC007 TEMPO 1309/1405 22013MPS 2100 -SHRA SCT005 BKN012CB FM140500 28008MPS 6000 BKN010

UDD 130930Z 20008MPS 9999 -RA BKN012 05/02 Q1001 R88/290095 NOSIG

TAF UDD 130756Z 1309/1415 20006MPS 5000 -RA BR OVC007 TX06/1313Z TN05/1403Z TEMPO 1309/1316 20011G16MPS 2500 -SHRA SCT005 BKN012CB TEMPO 1316/1405 2100 -SHRA BR BKN004 SCT015CB FM140500 30008MPS 8000 BKN009

UUMO 130930Z 20005MPS 8000 -RA OVC010 04/03 Q1001 R26/290050 NOSIG RMK QFE735/0981

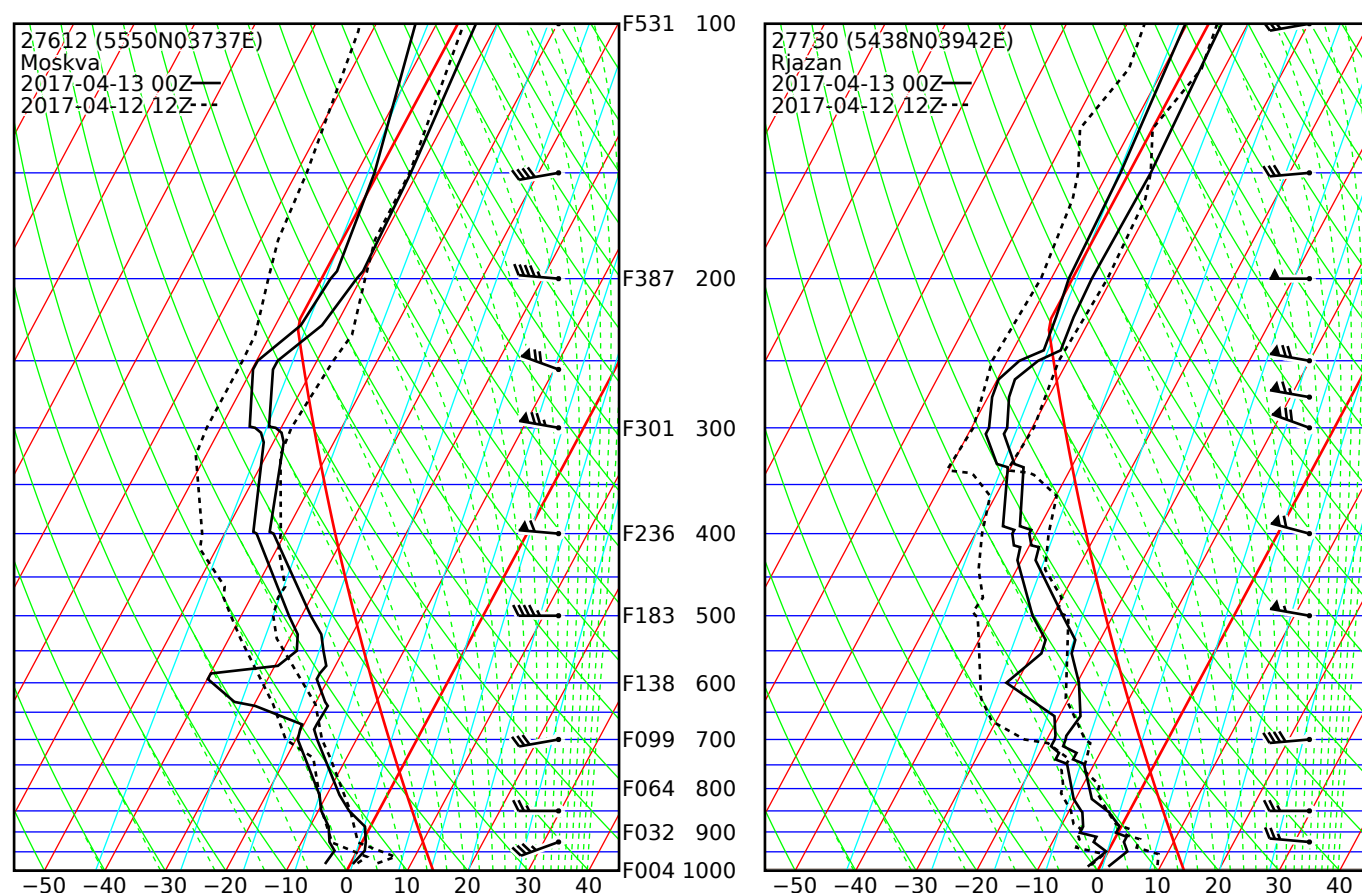
TAF UUMO 130756Z 1309/1318 20007MPS 7000 -RA BKN010 TEMPO 1309/1318 21012MPS 2500 -SHRA BKN006 SCT012CB

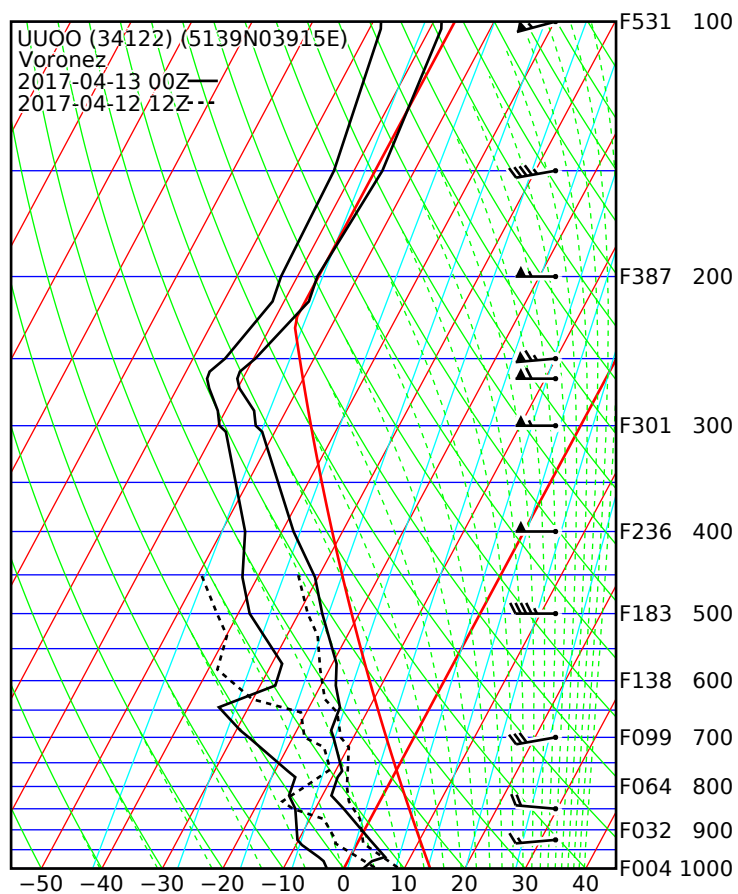
UUWW 130930Z 19005MPS 9999 -RA OVC008 04/03 Q1000 R24/290050 NOSIG

TAF UUWW 130759Z 1309/1409 19008MPS 6000 OVC009 TX06/1315Z TN04/1409Z TEMPO 1309/1315 19014MPS 2100 -SHRA BKN005 BKN012CB TEMPO 1315/1321 19014MPS 1200 SHRASN BKN004 BKN012CB TEMPO 1321/1409 2500 -SHRASN BKN005 SCT012CB

Category	Ceiling	Visibility
Unspecified	no flight rule classification	
Low Instrument Flight Rules LIFR	below 500 feet AGL	and/or less than 1 mile
Instrument Flight Rules IFR	500 to below 1000 feet AGL	and/or 1 mile to less than 3 miles
Marginal Visual Flight Rules MVFR	1000 to 3000 feet AGL	and/or 3 mile to less than 5 miles
Visual Flight Rules VFR	greater than 3000 feet AGL	and greater than 5 miles

2.7 Radio Soundings

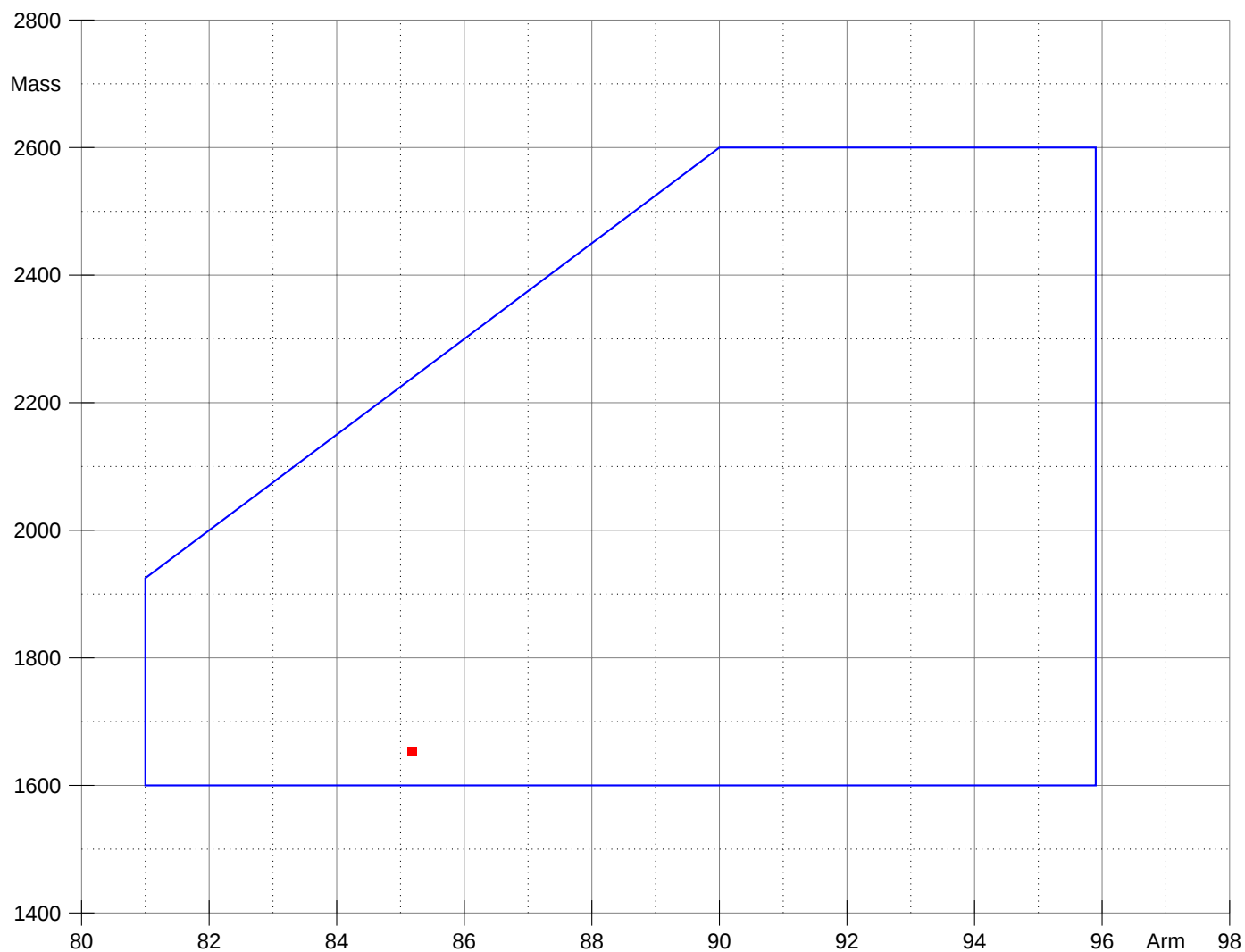




3 Mass & Balance

3.1 Mass & Balance

Name	Value	Unit	Arm	Mass	Mass Min	Mass Max	Moment
Pilot and Front Pax	0.0	lb	85.50	0.0	0.0	600.0	0.0
Rear Pax	0.0	lb	118.10	0.0	0.0	600.0	0.0
Cargo	0.0	lb	142.80	0.0	0.0	200.0	0.0
Fuel	0.0	USGal	95.00	0.0	0.0	300.9	0.0
Oil	0.0	lb	29.50	0.0	0.0	15.0	0.0
Gear		Retracted	8190.00	0.1	0.0	0.1	819.0
Basic Empty Mass			84.69	1653.0	1653.0	1653.0	139992.6
Zero Fuel			85.18	1653.1		2600.0	140811.6
Hold			85.18	1653.1		2600.0	140811.6
Alternate			85.18	1653.1		2600.0	140811.6
Landing			85.18	1653.1		2600.0	140811.6
Take Off			85.18	1653.1		2600.0	140811.6
Ramp			85.18	1653.1		2600.0	140811.6



3.2 Fuel Planning

Name	Fuelflow	Amount	Fuel
Taxi Fuel	0.0	00:10	0.5
Trip Fuel			21.7
Contingency		5%	1.1
Final Reserve F130	8.3	00:45	6.2
Required Fuel			29.5
Extra Fuel			-29.5
Block Fuel			0.0

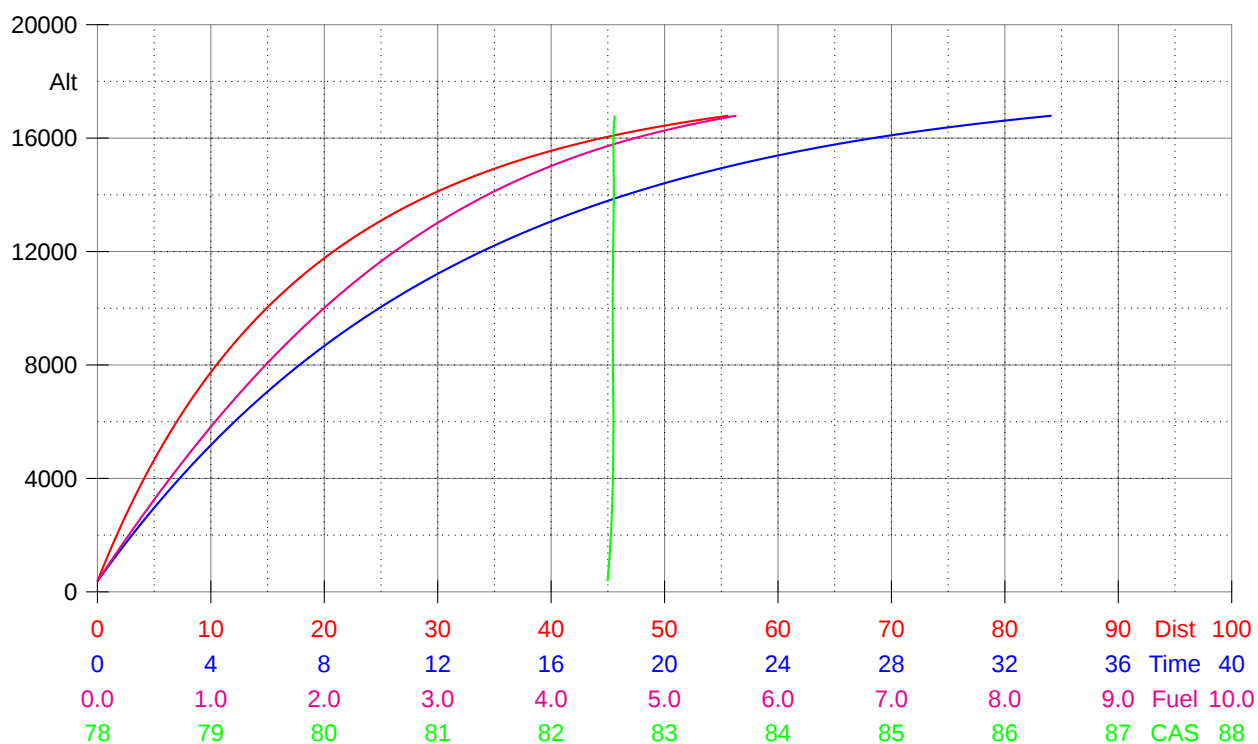
3.3 Distances

Waypoint	Dist	Condition	DA (ft)	Headwind (kts)	Mass (lb)	Soft Field	Ground Roll (m)	Obstacle (m)
UUEE SHERMETYEVO	T/O	Flaps 25	301	0	1653	0%	153	414
UUEE SHERMETYEVO	T/O	Flaps 0	301	0	1653	0%	206	451
UUEE SHERMETYEVO	Ldg	Flaps 40	301	0	1653	N/A	151	327
UUOO VORONEZH	Ldg	Flaps 40	331	0	1523	N/A	140	315

3.4 Climb

DA 301ft, QFF 999.1hPa, ISA-7°C, TO Mass 1653lb (750kg)

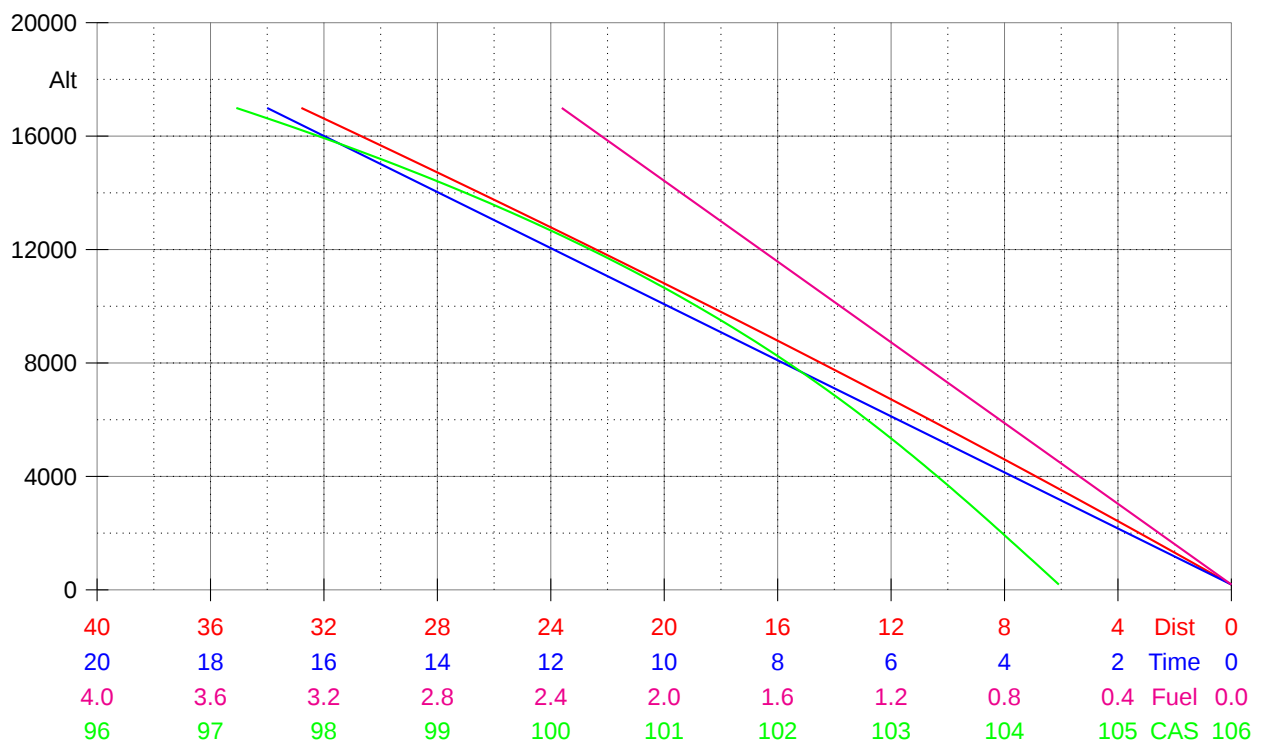
True Alt ft	PA FL	DA ft	Rate ft/min	Track nmi	Time	Fuel usg	FF usg/h	TAS kts	Gradient %
1000	14	681	1318	0.4	00:17	0.1	13.5	84	15.33%
2000	24	1708	1238	1.5	01:05	0.2	13.2	86	14.75%
3000	35	2735	1157	2.8	01:56	0.4	12.9	87	14.16%
4000	45	3762	1076	4.1	02:51	0.6	12.5	88	13.56%
5000	55	4789	995	5.6	03:50	0.8	12.2	90	12.95%
6000	65	5816	914	7.2	04:55	1.0	11.8	91	12.34%
7000	75	6843	833	9.0	06:05	1.3	11.5	92	11.71%
8000	86	7869	751	11.0	07:22	1.5	11.1	94	11.07%
9000	96	8896	670	13.2	08:49	1.8	10.8	95	10.42%
10000	106	9923	588	15.8	10:26	2.1	10.5	97	9.74%
11000	116	10950	507	18.9	12:18	2.4	10.1	98	9.04%
12000	126	11977	426	22.5	14:30	2.7	9.8	100	8.31%
13000	137	13004	345	27.0	17:10	3.2	9.4	102	7.54%
14000	147	14031	264	32.8	20:33	3.7	9.1	103	6.71%
15000	157	15057	182	40.8	25:11	4.4	8.8	105	5.79%
16000	167	16084	103	54.0	32:37	5.4	8.4	107	4.69%



3.5 Descent

DA 331ft, QFF 1008.5hPa, ISA-3°C, Ldg Mass 1653lb (750kg)

True Alt ft	PA FL	DA ft	Rate ft/min	Track nmi	Time	Fuel usg	FF usg/h	TAS kts	Gradient %
1000	11	823	989	0.9	00:30	0.1	8.3	106	9.16%
2000	21	1834	989	2.7	01:31	0.2	8.3	107	9.10%
3000	32	2846	989	4.5	02:32	0.4	8.3	109	9.04%
4000	42	3857	989	6.4	03:34	0.5	8.3	110	8.99%
5000	52	4869	989	8.3	04:35	0.6	8.3	111	8.93%
6000	62	5880	989	10.2	05:36	0.8	8.3	113	8.88%
7000	72	6892	989	12.1	06:37	0.9	8.3	114	8.82%
8000	82	7904	989	14.0	07:39	1.1	8.3	115	8.77%
9000	92	8915	989	16.0	08:40	1.2	8.3	117	8.72%
10000	102	9927	989	18.0	09:41	1.3	8.3	118	8.66%
11000	112	10938	989	20.0	10:42	1.5	8.3	119	8.61%
12000	122	11950	989	22.1	11:44	1.6	8.3	121	8.56%
13000	133	12961	989	24.1	12:45	1.8	8.3	122	8.51%
14000	143	13973	989	26.2	13:46	1.9	8.3	123	8.46%
15000	153	14984	988	28.3	14:47	2.1	8.3	124	8.41%
16000	163	15996	988	30.5	15:49	2.2	8.3	126	8.37%
17000	173	17008	988	32.0	16:32	2.3	8.3	126	8.48%

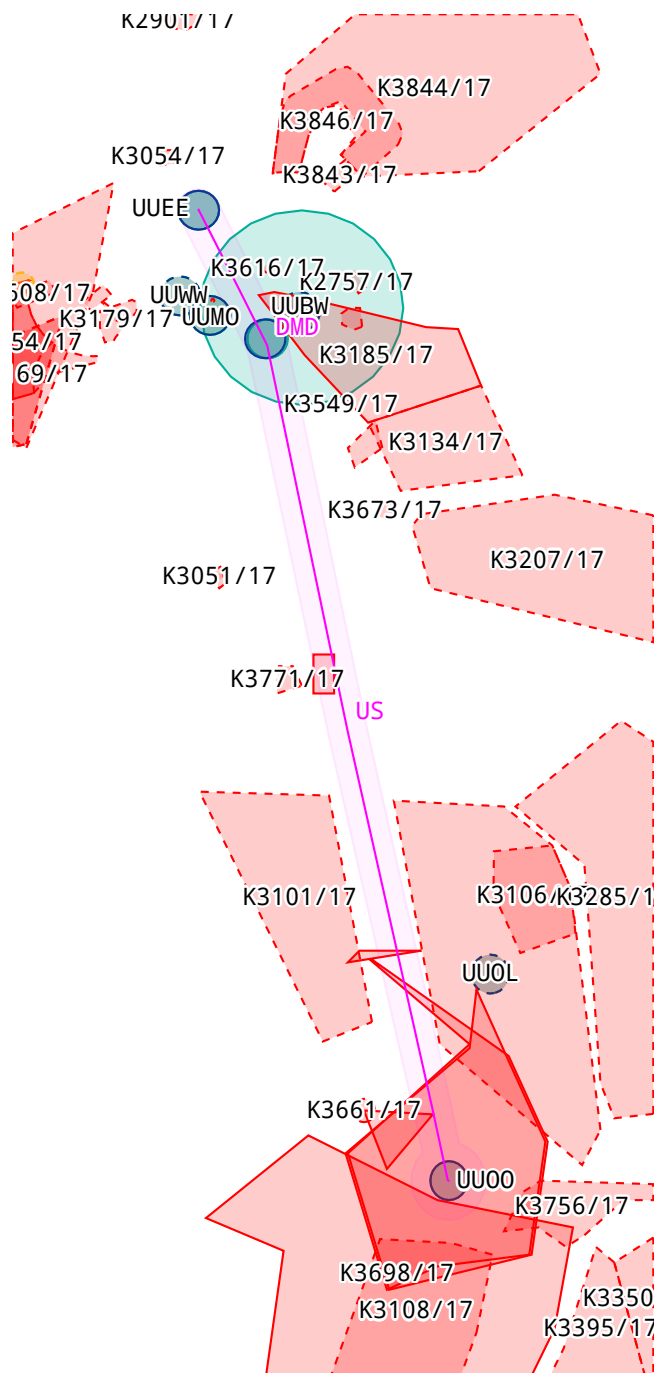


4 ATC Briefing

4.1 Addressing

FIR UUWV
AFTN UUWZDZX UUWVZDZX

4.2 NOTAM



Color	Description	Color	Description
■	Prohibited, Restricted and Danger Areas	■	Military Operations Areas
■	Parachute Jumping Areas	■	Navigation Related
■	Aerodrome Related	■	Other

Departure UUEE SHEREMETYEVO

UUEE AERODROME WORK IN PROGRESS - [suppress](#)
From 2017-04-11 13:23 until 2017-07-11 20:59

A1464/17

CONSTRUCTION WIP ON EAST SIDE OF TWY A1 AT DIST 52M FROM TWY CL.	↑
UUEE AERODROME WORK IN PROGRESS - suppress From 2017-04-11 13:22 until 2017-07-11 20:59 CONSTRUCTION WIP ON NORTH SIDE OF MAIN TWY A AT DIST 45M FROM MAIN TWY CL (BTN TWY A18 AND TWY A4) AND ON SOUTH SIDE OF MAIN TWY A AT DIST 45M FROM MAIN TWY CL (BTN TWY A12 AND A13).	A1463/17
	↑
UUEE AERODROME WORK IN PROGRESS - suppress From 2017-04-11 13:19 until 2017-07-11 20:59 CONSTRUCTION WIP FM TWY A7 TO TWY A8 AT DIST 40M SOUTH OF MAIN TWY A CL.	A1462/17
	↑
UUEE AERODROME WORK IN PROGRESS - suppress From 2017-04-11 13:00 until 2017-07-11 20:59 WIP AT NORTH SIDE OF RWY 06L/24R AT DIST 130M FROM RCL, TWY 3 AREA AND NORTH SIDE RWY 06R/24L AT DIST 130 M FROM RCL, TWY 13 AREA.	A1461/17
	↑
UUEE AERODROME OTHER - suppress From 2017-03-25 00:00 until 2017-06-22 23:59 EST FOR THE PURPOSE OF TRAFFIC EXPEDITION THE FLIGHT CREW CAN BE CLEARED FOR THE IMMEDIATE TAKE-OFF. WHEN RECEIVING SUCH CLEARANCE THE FLIGHT CREW SHALL TAXI ONTO RUNWAY AND TAKE-OFF WITHOUT STOPPING. THE FLIGHT CREW SHALL PROVIDE TAKE-OFF WITHOUT STOPPING AFTER LINING UP NOT LATER THAN 30 SECONDS FROM THE MOMENT OF RECEIVING OF TAKE-OFF CLEARANCE AT LINE-UP POSITION. REF AIP AD 2.20 UUEE-15, ITEM 1.3.	A1115/17
	↑
UUEE AERODROME OTHER - suppress From 2017-03-16 09:00 until 2017-06-21 23:59 REF AIP BOOK 1 PAGE AD 2.1 UUEE-16 (SEE LINE 3 FROM ABOVE) FLW INFORMATION WITHDRAWN COMPLETELY: ,,THE SEPARATION INTERVALS AT MOSCOW/SHEREMETYEVO AERODROME SHALL NOT BE LESS THAN THE FOLLOWING MININA: A) LANDING AIRCRAFT,,.	A0976/17
	↑
UUEE AERODROME OTHER - suppress From 2017-03-16 09:00 until 2017-06-22 00:00 INFO, PUBLISHED IN AIP BOOK 1 PAGE AD 2.1 UUEE-17 POINT 1.6 ''PROCEDURE ''LANDING AFTER'', CANCELLED. REF AIP AD 2.1 UUEE-17.	A0975/17
	↑
UUEE AERODROME OTHER - suppress From 2017-03-16 09:00 until 2017-06-22 00:00 WHEN THE DEPARTURE DELAY IS 30 MIN AND MORE FROM FLIGHT PLANNED DEPARTURE TIME, DLA MESSAGE OR NEW FPL MUST BE ISSUED IRRESPECTIVE OF THE REASON OF DELAY. REF AIP AD 2.1 UUEE-13, POINT 1.3.	A0972/17
	↑
UUEE AERODROME OTHER - suppress From 2017-03-16 09:00 until 2017-06-22 00:00 PILOTS SHALL CONTACT SHEREMETYEVO-DELIVERY WITH REQ FOR DEP CLR NOT EARLIER THAN 14 MIN BEFORE TOBT (TARGET OFF BLOCKS TIME). REQ FOR ASSIGNMENT OF ANOTHER SID FOR SOUTHBOUND DEP FROM MOSCOW TMA SHALL BE FORWARDED 20 MIN BEFORE TOBT AND SOBT (SCHEDULED OFF BLOCKS TIME).	A0971/17
	↑
UUEE AERODROME WORK IN PROGRESS - suppress From 2017-02-28 12:30 until 2017-05-28 20:59 CONSTRUCTION WIP AT NORTH SIDE OF MAIN TWY 1 NEAR TWY 8 (AT DIST 54M FM MAIN TWY 1 CL).	A0706/17
	↑

UUEE AERODROME WORK IN PROGRESS - [suppress](#)**A0232/17**

From 2017-01-20 09:00 until 2017-04-20 20:59

CONSTRUCTION WIP WEST OF TWY 1, AT DIST 60M FROM TWY CL.

**UUEE AERODROME LIMITED - [suppress](#)****A0231/17**

From 2017-01-20 09:00 until 2017-04-20 20:59

ALTN NOT PROVIDED EXCEPT FOR FLT TO/FM MOSCOW/SHEREMETYEVO AD,

INTL FLT, VIP FLT, MEDICAL AND SAR FLT AND FLT IN EMERGENCY.

**UUEE AERODROME OTHER - [suppress](#)****A1514/16**

From 2016-04-15 11:00 until PERM

AD AVBL FOR ACFT TYPES AS FLW:

AEROSPATIALE SN601 CORVETTE, AGUSTAWESTLAND A109,
AIRCRAFT INDUSTRIES (LET) 410 FREIGHTER, AIRCRAFT INDUSTRIES (LET)
410, ANTONOV AN-158, ANTONOV AN22, ANTONOV AN-38, ATR 42 FREIGHTER,
ATR 42-300 / 320, ATR 42-400, ATR 72, ATR 72 FREIGHTER, AVRO RJ100,
AVRO RJ70, AVRO RJ85, BAE SYSTEMS (DE HAVILLAND) 104 DOVE, BAE
SYSTEMS (DE HAVILLAND) 114 HERON, BAE SYSTEMS (HAWKER SIDDELEY)
748 / ANDOVER, BAE SYSTEMS 146-100 FREIGHTER, BAE SYSTEMS 146-100
PASSENGER, BAE SYSTEMS 146-200 FREIGHTER, BAE SYSTEMS 146-200
PASSENGER, BAE SYSTEMS 146-300 FREIGHTER, BAE SYSTEMS 146-300
PASSENGER, BAE SYSTEMS ATP, BAE SYSTEMS ATP FREIGHTER, BAE SYSTEMS
JETSTREAM 31, BAE SYSTEMS JETSTREAM 32, BAE SYSTEMS JETSTREAM 41,
BOEING (DOUGLAS) DC-3 FREIGHTER, BOEING (DOUGLAS) DC-3 PASSENGER,
BOEING (DOUGLAS) DC-4, BOEING (DOUGLAS) DC-6A / DC-6B / DC-6C
FREIGHTER, BOEING (DOUGLAS) DC-6B PASSENGER, BOEING 717-200,
BOMBARDIER CS100, BOMBARDIER CS300, BRITTEN-NORMAN BN-2A /BN-2B
ISLANDER, BRITTEN-NORMAN BN-2A MK.LLL TRISLANDER, CANADAI R
(BOMBARDIER) REGIONAL JET 100, CANADAI R (BOMBARDIER) REGIONAL JET
1000, CANADAI R (BOMBARDIER) REGIONAL JET 200.

REF AIP BOOK 1 AD 1.3-15.

**UUEE AERODROME OTHER - [suppress](#)****A1513/16**

From 2016-04-15 11:00 until PERM

AD AVBL FOR ACFT TYPES AS FLW:

FOKKER F28 FELLOWSHIP 1000, F28 FELLOWSHIP 2000, FOKKER F28
FELLOWSHIP 3000, FOKKER F28 FELLOWSHIP 4000, GIPPSLAND AERONAUTICS
GA8 AIRVAN, GIPPSLAND AERONAUTICS N22B / N24A NOMAD, GRUMMAN G-21
GOOSE (AMPHIBIAN), GRUMMAN G-73 TURBO MALLARD (AMPHIBIAN),
GULFSTREAM AEROSPACE G100/G-150, GULFSTREAM AEROSPACE G-200
(GALAXY), GULFSTREAM AEROSPACE G-250, HARBIN YUNSHUJI Y12,
HAWKER 1000, HAWKER 200, 390 PREMIER 1/1 A, HAWKER 4000, HAWKER
850XP/900, HAWKER 900XP, HAWKER BEECHCRAFT (LIGHT AIRCRAFT-SINGLE
PISTON ENGINE), HAWKER BEECHCRAFT (LIGHT AIRCRAFT-TWIN PISTON
ENGINES), HAWKER BEECHCRAFT C99 AIRLINER, HELIO H-250 COURIER /
H-295 / 395 SUPER COURIER, ISRAEL AEROSPACE INDUSTRIES 1124
WESTWIND, LOCKHEED MARTIN L-1011 TRISTAR 500 PASSENGER, LOCKHEED
MARTIN L-1011 TRISTAR FREIGHTER, MARTIN L-188 ELECTRA, LOCKHEED
MARTIN L-188 ELECTRA FREIGHTER, NAMC YS-11, PIAGGIO AERO P180 AVANTI
II, SHAANXI Y-8, SHORTS 330 (SD3-30), SHORTS 360 (SD3-60), SHORTS
SKYVAN (SC-7), TWIN (AERO) TURBO COMMANDER / JETPROP COMMANDER, TWIN
COMMANDER AIRCRAFT, VULCANAI R (PARTENAVIA) P.68, YUNSHUJI MA-60, XIAN
YUNSHUJI Y7.

REF AIP BOOK 1 AD 1.3-15.

**UUEE AERODROME OTHER - [suppress](#)****A1512/16**

From 2016-04-15 11:00 until PERM

AD AVBL FOR EXPLOITATION OF FLW ACFT:

CANADAI R (BOMBARDIER)REGIONAL JET 700 AND CHALLENGER 870, CANADAI R
(BOMBARDIER) REGIONAL JET 705, CANADAI R (BOMBARDIER) REGIONAL JET
900 AND CHALLENGER 890, CANADAI R (BOMBARDIER) REGIONAL JET FREIGHTER
CASA / LAE 212 AVIOCAR, CASA/LAE CN-235, COMAC ARJ21-700, CONVAIR
240 FREIGHTER, CONVAIR 240 PASSENGER, CONVAIR 340 / 440 FREIGHTER,

CONVAIR 440 METROPOLITAN PASSENGER, CONVAIR 580 / 5800 / 600 / 640
FREIGHTER, CONVAIR 580 PASSENGER, CURTISS C-46 COMMANDO, DASSAULT
FALCON 7X, DE HAVILLAND (BOMBARDIER) DHC-2 BEAVER, DE HAVILLAND
(BOMBARDIER) DHC-2 TURBO-BEAVER, DE HAVILLAND (BOMBARDIER) DHC-3
OTTER, DE HAVILLAND (BOMBARDIER) DHC-3 TURBO OTTER, DE HAVILLAND
(BOMBARDIER) DHC-4 CARIBOU, DE HAVILLAND (BOMBARDIER) DHC-7 DASH 7,
DE HAVILLAND (BOMBARDIER) DHC-8-100 DASH 8 / 8Q, DE HAVILLAND
(BOMBARDIER) DHC-8-200 DASH 8 / 8Q, DE HAVILLAND (BOMBARDIER) DHC-8
-300 DASH 8 / 8Q, DIAMOND AIRCRAFT DA42 TWIN STAR, EMBRAER 110
BANDEIRANTE, EMBRAER 120 BRASILIA, EMBRAER EMB-500 PHENOM 100,
EMBRAER EMB-505 PHENOM 300, EMBRAER RJ135 AND LEGACY 600/650,
EMBRAER RJ140, FAIRCHILD DORNIER 228, FAIRCHILD INDUSTRIES FH-227,
FOKKER F27 FRIENDSHIP / FAIRCHILD INDUSTRIES F-27.
REF AIP BOOK 1 AD 1.3-15.

↑

UUEE METEOROLOGICAL SERVICE OTHER - [suppress](#)

A0238/17

From 2017-01-20 10:00 until 2017-04-20 20:59

MEASURED FRICTION COEFFICIENT ON RWY INCLUDED INTO METAR.

↑

UUEE MOVEMENT AREA OTHER - [suppress](#)

A1097/17

From 2017-03-22 10:00 until 2017-06-22 20:59

TERMINAL B APRON:

1. ACFT TAX OUT OF ACFT STANDS 25, 26, 33 SHALL BE CARRIED OUT BY
PUSH-BACK.
2. TAXI ROUTES CLSD: FROM ACFT STAND 11 TO ACFT STAND 25,
FROM TWY 8 TO ACFT STAND 1.
3. ACFT TAX TO ACFT STANDS 4-6 SHALL BE CARRIED OUT VIA ACFT
STAND 11.
4. ACFT TAX TO ACFT STAND 33 SHALL BE CARRIED OUT UNDER OWN ENGINES
POWER VIA TWY 7, ONLY FOR ACFT WITH WING SPAN 48.1M OR LESS.
5. TWY 8 CLSD.
6. ACFT STANDS 20, 19A, 31, 32 CLSD.

↑

UUEE MOVEMENT AREA OTHER - [suppress](#)

A0888/17

From 2017-03-13 13:30 until 2017-06-13 20:59

TERMINAL F APRON:

1. ACFT TAX ONTO ACFT STAND 52 UNDER OWN ENGINES POWER PERMITTED
ONLY FOR ACFT WITH WING SPAN 64.8 M AFTER FOLLOW-ME CAR.
ACFT PARKING ONTO STAND 52 SHALL BE MADE BY MARSHALLER
INSTRUCTIONS.
2. ACFT TAX ONTO ACFT STAND 53 UNDER OWN ENGINES POWER PERMITTED
ONLY FOR ACFT WITH WING SPAN 31 M AND LESS.
3. ACFT PARKING ONTO STAND 53 PERMITTED BY TOWING FOR ACFT
WITH WING SPAN 42 AND LESS.

↑

UUEE AIRCRAFT STANDS INSTALLED - [suppress](#)

A0893/17

From 2017-03-13 13:40 until 2017-06-13 20:59

TERMINAL F APRON:

ACFT STAND 63A LOCATED EAST OF ACFT STAND 58 PUT INTO OPERATION.
ACFT STAND INTENDED FOR SERVICING OF BOEING 777-ER AND SMALLER
ACFT TYPES. ACFT PARKING ONTO STAND CARRIED OUT UNDER OWN ENGINES
POWER AFTER FOLLOW ME CAR, ACFT TAX OUT OF STAND CARRIED OUT BY
TOWING.

↑

UUEE AIRCRAFT STANDS OTHER - [suppress](#)

A0891/17

From 2017-03-13 13:30 until 2017-06-13 20:59

TERMINAL C APRON:

PARKING OF SUKHOI SUPERJET 100 ACFT ONTO STANDS 28A, 28B, 29A, 29B,
30A, 30B SHALL BE MADE BY MARSHALLER INSTRUCTIONS.

↑

UUEE AIRCRAFT STANDS CLOSED - [suppress](#)

A0890/17

From 2017-03-13 13:30 until 2017-06-13 20:59

TERMINAL B APRON: ACFT STANDS 1, 2, 3, 3A, 3B, 21, 22, 22D, 23 ARE

CLSD.	↑
UUEE AIRCRAFT STANDS OTHER - suppress From 2017-03-13 13:30 until 2017-06-13 20:59 APRON OF TERMINAL B: TAX OUT OF STANDS 97A, 99A, 101A CARRIED OUT UNDER POWER.	A0889/17
	↑
UUEE AIRCRAFT STANDS OTHER - suppress From 2017-01-20 09:00 until 2017-04-20 20:59 TERMINAL C APRON: ACFT PARKING ONTO ACFT STAND 28B CARRIED OUT BY MARSHALLER INSTRUCTIONS.	A0234/17
	↑
UUEE AIRCRAFT STANDS CLOSED - suppress From 2017-01-20 09:00 until 2017-04-20 20:59 TERMINAL C APN: ACFT STAND 28 CLSD.	A0233/17
	↑
UUEE TAXIWAY(S) WORK IN PROGRESS - suppress From 2017-03-22 10:00 until 2017-06-22 20:59 CONSTRUCTION WIP ON WEST AND EAST SIDE OF TWY 11, 14, 15, A5 AT DIST 55M FROM TWY CL.	A1098/17
	↑
UUEE TAXIWAY(S) OTHER - suppress From 2017-03-22 10:15 until 2017-06-22 20:59 TWY A15, A16, A17, A18 ARE NON-RAPID, AVBL FOR TAX OF ACFT WITH LENGTH 69M OR LESS.	A1096/17
	↑
UUEE TAXIWAY(S) WORK IN PROGRESS - suppress From 2017-02-08 12:00 until 2017-05-04 20:59 WIP AT SOUTH SIDE OF MAIN TWY 1, FROM TWY 5 TO TWY 3 AT DIST 57.5M FROM MAIN TWY 1 CL.	A0463/17
	↑
UUEE OBSTACLE ERECTED - suppress From 2017-04-11 13:25 until 2017-07-11 20:59 CRANES ERECTED AS FLW: HGT 90M, (COORD 555244.00N 0372552.00E) TRUE AZM 174 DEG, DIST 10.5KM FROM ARP.	A1465/17
	↑
UUEE OBSTACLE ERECTED - suppress From 2017-03-13 13:40 until 2017-06-13 20:59 RELAY STATION INSTALLED AS FLW: ALT: 351.2M, COORD: 560117.80N 0371247.90E . DAY MARKING NOT PROVIDED.	A0894/17
	↑
UUEE OBSTACLE ERECTED - suppress From 2017-03-13 13:40 until 2017-06-13 20:59 CONSTRUCTION CRANE ERECTED: ALT 233M, TRUE AZM 179 DEG, DIST 1300M FROM ARP.	A0892/17
	↑
UUEE OBSTACLE ERECTED - suppress From 2017-03-06 12:00 until 2017-06-06 20:59 CONSTRUCTION CRANES (MAX ALT 262 M) ERECTED WI TERMINAL B RECONSTRUCTION AREA NORTH OF RWY 24R/06L CL AT DIST 380-830M. OBST LGT INSTALLED.	A0787/17
	↑
UUEE OBSTACLE ERECTED - suppress From 2017-02-08 12:00 until 2017-09-10 20:59 CONST CRANE ERECTED: ALT 230M, TRUE AZM 278DEG, DIST 4500M FROM ARP.	A0462/17
	↑

UUEE OBSTACLE ERECTED - suppress From 2017-01-20 09:00 until 2017-04-20 20:59 CONSTRUCTION CRANE ERECTED: ALT 235M, AZM 188 DEG TRUE, DIST 1440M FROM ARP.	A0237/17 ↑
UUEE OBSTACLE ERECTED - suppress From 2017-01-20 09:00 until 2017-04-20 20:59 CONSTRUCTION CRANES ERECTED: ALT 239M, TRUE AZM 044 DEG, DIST 1630M FM ARP.	A0236/17 ↑
UUEE OBSTACLE ERECTED - suppress From 2017-01-20 09:00 until 2017-04-20 20:59 CRANE ERECTED: AZM 267DEG, DIST 2200M FROM ARP. ALT: 203M.	A0235/17 ↑
UUEE AERODROME OPERATING MINIMA CHANGED - suppress From 2017-02-06 06:00 until 2017-05-05 20:59 EST RWY 24L AND RWY 24R: OCA(OCH) FOR RNAV(GNSS) APCH ESTABLISHED FOR CAT A,B,C,D ACFT: 337(147)M. REF AIP AD 2.1 UUEE-160, 162.	A0423/17 ↑
Destination UUOO VORONEZH	
UUOO AIR/GROUND INSTALLED - suppress From 2016-04-04 08:00 until PERM VORONEZH-GROUND FREQ 126.0 MHZ ESTABLISHED FOR COMMUNICATION WITH MAINTENANCE PERSONNEL DURING ACFT TOWING AND ENGINE START-UP. OPR H24, RUSSIAN. REF AIP BOOK 1 PAGE AD 2.1 UU00-7,31,39.	A1254/16 ↑
UUOO AERODROME OTHER - suppress From 2017-03-29 08:00 until PERM AD AVBL FOR ARR/DEP OF EMBRAER ERJ-170/175 ACFT AND MODIFICATIONS. ACFT STANDS 1, 1A, 1B, 2, 2A, 2B, 3, 3A, 3B, 5-8, 19-22, 24-29 AVBL FOR PARKING OF ABOVE-MENTIONED ACFT TYPES. REF AIP BOOK 1 PAGE AD 1.3-26, AD 2.1 UU00-39.	A1224/17 ↑
UUOO FIRE FIGHTING AND RESCUE INSTALLED - suppress From 2016-12-23 11:00 until PERM AD CAT 7 FOR FIRE FIGHTING PROVIDED. REF AIP BOOK 1 AD 2.1 UU00-2.	A6222/16 ↑
UUOO MOVEMENT AREA OTHER - suppress From 2017-03-22 11:00 until 2017-08-14 23:59 EST 1. ACFT TAX VIA TWY A AND TWY B IN DAY-TIME IN LOW VISIBILITY CONDITIONS AND IN NIGHT-TIME CARRIED OUT STRICTLY ALONG TWY CENTRE LINE AFTER FOLLOW-ME VEHICLE. WHEN TWY A AND TWY B MARKING NOT VISIBLE ACFT MOVEMENT CARRIED OUT BY TOWING ONLY. 2. ACFT TAX INTO STANDS 1, 1A, 1B, 2, 2A, 2B, 3, 3A, 3B CARRIED OUT UNDER OWN ENGINES POWER, ACFT TAX OUT OF STANDS 1, 1A, 1B, 2, 2A, 2B, 3, 3A, 3B CARRIED OUT BY TOWING. 3. ACFT PARKING ONTO ACFT STANDS 5-8 CARRIED OUT BY TOWING, ACFT TAX OUT OF STANDS 5-8 CARRIED OUT UNDER OWN ENGINES POWER. HEL TAX INTO/OUT OF STANDS CARRIED OUT UNDER OWN ENGINES POWER. 4. ACFT TAX INTO ACFT STANDS 19-22 CARRIED OUT UNDER OWN ENGINES POWER OR BY TOWING, ACFT TAX OUT OF STANDS 19-22 CARRIED OUT BY TOWING OR UNDER OWN ENGINES POWER WHEN ACFT PARKED FACING RWY. 5. IL-76T (TD), BOEING 767-200(ER), BOEING 767-300(ER) ACFT TAX INTO STANDS 26-29 CARRIED OUT UNDER OWN ENGINES POWER ONLY ON TWY C. TAX OUT OF STANDS 26-29 CARRIED OUT BY TOWING, THEN TAX CARRIED OUT	A1102/17

<p>UNDER OWN ENGINES POWER ONLY ON TWY C TO RWY. IL-76T (TD), BOEING 767-200(ER), BOEING 767-300(ER) ACFT TAX INTO STANDS 1-3 CARRIED OUT UNDER OWN ENGINES POWER ON TWY A OR INTO STAND 1, STAND 3 ON TWY B. TAX OUT OF STANDS 1-3 CARRIED OUT BY TOWING, THEN TAX CARRIED OUT UNDER OWN ENGINES POWER ONLY ON TWY A OR TWY B TO RWY.</p>	↑
<p>UUOO MOVEMENT AREA OTHER - suppress From 2017-03-22 11:00 until 2017-08-14 23:59 EST LANDING OF SKID-EQUIPPED LANDING GEAR HEL CARRIED OUT ON RWY. AIR TAXIING OF HEL ONTO ACFT STANDS 5-8 CARRIED OUT ALONG TAXI GUIDE LINE IF THERE ARE NO PARKED ACFT ON STANDS 19-22.</p>	A1101/17 ↑
<p>UUOO AIRCRAFT STANDS OTHER - suppress From 2017-03-20 06:30 until 2017-08-14 23:59 EST DUE TO RECONSTRUCTION OF APN: ACFT STANDS 1-4, 29A, 30-35, 33A WITHDRAWN. ON ACFT STANDS 30-35: STANDS 1, 1A, 1B, 2, 2A, 2B, 3, 3A, 3B INTRODUCED. ACFT STAND 28A RENUMBERED TO 19. ACFT STANDS 20-22 PUT INTO OPR NEAR STAND 19. ACFT STANDS 5-8 AVBL DRG DAY LGT HR ONLY.</p>	A1030/17 ↑
<p>UUOO AIRCRAFT STANDS OTHER - suppress From 2016-04-22 14:26 until PERM DUE TO RECONSTRUCTION OF APN PART: - ACFT STANDS 6, 7, 8, 12, 13, 25, 26, 27A WITHDRAWN. - ACFT STANDS 9, 10, 11, 23 RENAMED TO 6, 7, 8, 25 ACCORDINGLY, - ACFT STAND 26 (LCA BTN ACFT STANDS 25 AND 27) COMMISSIONED. REF AIP BOOK 1 PAGES AD 2.1 UU00-3, 11, 39.</p>	A1622/16 ↑
<p>UUOO RUNWAY OTHER - suppress From 2016-12-23 08:30 until PERM RWY 12/30: AFTER LDG ACFT WITH MASS MORE, THEN 30 TONS, SHALL CARRY OUT 180 DEG TURN STRICTLY AT RWY ENDS ON RWY TURN PADS. REF AIP BOOK 1 PAGES AD 2.1 UU00-11,39.</p>	A6217/16 ↑
<p>UUOO RUNWAY OTHER - suppress From 2015-11-20 13:00 until PERM RWY 12/30: DIMENTIONS 2300X45M, CONCRETE REINFORCED BY ASPHALT-CONCRETE, PCN 42/R/B/X/T. REF AIP AD 2.1 UU00-5,31.</p>	A5277/15 ↑
<p>UUOO TAXIWAY(S) OTHER - suppress From 2017-03-14 11:00 until 2017-08-14 23:59 EST TWY 1, TWY 2 RENAMED TO TWY A, TWY B ACCORDINGLY. TWY A, TWY B: WIDTH 21M, ASPHALT-CONCRETE, PCN 52/F/D/X/T.</p>	A0910/17 ↑
<p>UUOO OBSTACLE ERECTED - suppress From 2015-12-15 00:00 until PERM TAR INSTALLED AT AD WITH FLW SPECIFICATIONS: COORDINATES 514911.6N 0391339.6E, AZM 344 DEG AT DIST 550M FM ARP, ALT 183.48M. REF AIP AD 2.1 UU00-31.</p>	A5689/15 ↑
<p>UUOO OBSTACLE ERECTED - suppress From 2014-02-03 06:00 until PERM SIX ILLUMINATING MASTS INSTALLED AT AD: MAST 1: COORD 514833N 0391354.1E, AZM 167DEG 56MIN, DIST 663M FROM ARP, ALT 185.5M. MAST 2: COORD 514832N 0391355.9E, AZM 165DEG 39MIN, DIST 700M FROM ARP, ALT 185M. MAST 3: COORD 514831.6N 0391405E, AZM 153DEG,</p>	A0292/14

DIST 777M FROM ARP, ALT 183.9M.
 MAST 4: COORD [514830.7N 0391358.4E](#), AZM 162DEG 58MIN,
 DIST 751M FROM ARP, ALT 184.3M.
 MAST 5: COORD [514830.5N 0391403.8E](#), AZM 156DEG,
 DIST 795 M FROM ARP, ALT 184M.
 MAST 6: COORD [514829.1N 0391401E](#), AZM 160DEG 38MIN,
 DIST 804M FROM ARP, ALT 184M.
 DAY MARKING PROVIDED.
 REF AIP AD 2.1 UU00-3,31,55,69,70,87,88,89,97,98,113,114.

↑

UUBW RAMENSKOYE

UUBW VOR/DME UNSERVICEABLE - [suppress](#)

A0703/17

From 2017-02-28 07:30 until 2017-04-30 21:00 EST

RAMENSKOYE VOR/DME RT FREQ 117.9 MHZ CH126X OUT OF SERVICE

↑

UDD DOMODEDOVO

UDD AERODROME OTHER - [suppress](#)

A1508/17

From 2017-04-12 13:50 until 2017-05-01 23:59

ON THE FIRST CONTACT WITH DOMODEDOVO DELIVERY ON FREQ 129.50 MHZ
 ACFT CREW SHOULD ADVISE RWY FOR DEPARTURE.

↑

UDD AERODROME OTHER - [suppress](#)

A1142/17

From 2017-04-01 00:00 until PERM

AERODROME CHARGES ESTABLISHED:

- CHARGE FOR ENSURING AVIATION SECURITY - 7.3 USD PER 1 PASSENGER,
- TAKE-OFF AND LANDING CHARGE FOR FOREIGN OPERATORS - 11.5 USD PER 1 TON MTOM,
- CHARGE FOR PARKING OF ACFT FOR MORE THAN 3 HOURS AFTER LANDING - 10 PER CENT OF TAKE-OFF AND LANDING CHARGE PER 24 HR,
- CHARGE FOR USING TERMINAL BUILDING FOR FOREIGN AIRLINES - 9 USD PER 1 PASSENGER.

REF AIP GEN 4.1-7.

↑

UDD AERODROME OTHER - [suppress](#)

A0550/17

From 2017-02-15 10:00 until 2017-04-15 23:59 EST

DEP ROUTES ESTABLISHED FOR FLT FROM UDD TO UUBW AS FLW:

- RWY 32L/R CLIMB STRAIGHT AHEAD TO (900)M, TURN RIGHT TO LOM RT, THEN BY VECTORING.
- RWY 14L/R CLIMB STRAIGHT AHEAD TO (900)M, TURN LEFT TO LOM RT, THEN BY VECTORING.

↑

UDD DOCKING SYSTEM UNSERVICEABLE - [suppress](#)

A0439/17

From 2017-02-07 09:10 until 2017-04-15 23:59 EST

DOCKING GUIDANCE SYSTEM U/S ON FLW ACFT STANDS:

1, 11, 12A, 16, 18B, 21A, 22.

↑

UDD GNSS AIRFIELD-SPECIFIC OPERATIONS NOT AVAILABLE - [suppress](#)

A0287/17

From 2017-01-25 08:00 until 2017-04-27 23:59

RWY 14L/32R AND RWY 14R/32L: GLS APCH NOT TO BE USED.

↑

UDD INSTRUMENT LANDING SYSTEM UNSERVICEABLE - [suppress](#)

A1439/17

From 2017-04-11 12:00 until 2017-11-01 23:59 EST

RWY 32R ILS U/S DUE TO RECONSTRUCTION OF RWY 14L/32R.

↑

UDD INSTRUMENT LANDING SYSTEM UNSERVICEABLE - [suppress](#)

A1438/17

From 2017-04-11 12:00 until 2017-11-01 23:59 EST

RWY 14L: ILS U/S DUE TO RWY 14L/32R RECONSTRUCTION.

↑

UDD DME ASSOCIATED WITH ILS UNSERVICEABLE - suppress From 2017-04-11 12:00 until 2017-11-01 23:59 EST RWY 32R: DME ASSOCIATED WITH ILS U/S DUE TO RWY 14L/32R RECONSTRUCTION.	A1440/17	↑
UDD LOCATOR, MIDDLE (ILS) UNSERVICEABLE - suppress From 2017-04-11 12:00 until 2017-11-01 23:59 EST RWY 32R LMM(COMPASS LOCATOR AT MIDDLE MARKER ILS) E 887 KHZ U/S DUE TO RECONSTRUCTION OF RWY 14L/32R.	A1442/17	↑
UDD LOCATOR, MIDDLE (ILS) UNSERVICEABLE - suppress From 2017-04-11 12:00 until 2017-11-01 23:59 EST RWY 14L: LMM W 887 KHZ U/S DUE TO RWY 14L/32R RECONSTRUCTION.	A1441/17	↑
UDD HIGH INTENSITY RUNWAY LIGHTS UNSERVICEABLE - suppress From 2017-04-12 15:00 until 2017-11-01 23:59 EST RWY 14L/32R: LIH U/S DUE TO RWY RECONSTRUCTION.	A1509/17	↑
UDD PRECISION APPROACH PATH INDICATOR (PAPI) UNSERVICEABLE - suppress From 2017-04-12 15:00 until 2017-11-01 23:59 EST RWY 14L/32R PAPI OUT OF SERVICE DUE TO RWY RECONSTRUCTION.	A1510/17	↑
UDD THRESHOLD DISPLACED - suppress From 2017-04-11 12:00 until 2017-05-01 23:59 EST RWY 14L: THR DISPLACED BY 823M TOWARDS RCL RWY 14L/32R. DTHR COORD 552501.02348N 0375455.24221E , ELEV: 165.83M. RWY 32R: THR DISPLACED BY 750M TOWARDS RCL 14L/32R. DTHR COORD 552401.75340N 0375606.45761E , ELEV: 160.20M. RWY 14L/32R DECLARED DIST: TORA ASDA 2220M, TODA 2370M. RWY 14L/32R DTHR MARKED BY DAY. RWY 14L/32R AVBL ONLY FOR TKOF DRG DAYLIGHT HR WHEN VIS NOT LESS THAN 2000M. FENCE HGT UP TO 3M ESTABLISHED AT DIST 2661M FROM EXTREMITY OF RWY 14L, DIST 2697M FROM EXTREMITY OF RWY 32R. CONSTRUCTION EQPT OPR BEHIND THE FENCE. HGT OF EQPT NOT PROJECT ABOVE TAKE-OFF CLIMB SURFACE.	A1393/17	↑
UDD TAXIWAY(S) CLOSED - suppress From 2017-04-11 12:00 until 2017-05-01 23:59 TWY B1, B3, B6, B7 CLSD.	A1448/17	↑
UDD OBSTACLE ERECTED - suppress From 2016-12-21 12:00 until 2017-04-15 23:59 WI TMA 7 BUILDING CRANES OPR HGT UP TO 45M: AZM 358DEG, DIST 851M FM ARP. 2 CRANES WITHOUT DAY MARKING.	A6168/16	↑
UDD FLIGHT PLAN PROCESSING, FILING AND RELATED CONTINGENCY OTHER - suppress From 2017-03-22 07:40 until 2017-12-31 23:59 DUE TO PUTTING INTO OPR OF AUTOMATED TELEGRAM PROCESSING FLIGHT PLAN (FPL) AND ASSOCIATED CONVENTIONAL MESSAGES (DEP, ARR, DLA, CHG, CNL) SHALL BE SUBMITTED ONLY TO: SITA ADDRESS DMEOPXH OR AFTN ADDRESS UDDAPBF. WEF 01.04.2017 AFTN ADDRESSES UDDZPXZ UDDZTZF WILL BE WITHDRAWN.	A1090/17	↑
UUMO OSTAFYEVO UUMO AIRCRAFT STANDS CLOSED - suppress From 2017-03-23 08:30 until 2017-06-23 21:00 STANDS 13-31 CLSD.	A1116/17	↑

UUMO OBSTACLE ERECTED - suppress From 2017-03-30 08:00 until 2017-04-20 21:00 RWY26: CRANES ERECTED AT DIST 3053M - 3070M FROM RWY 26 DTHR TOWARDS LOM AND 52M NORTH OF EXTENDED RCL, ALT 241.9M, ELEV 70.8M ABOVE RWY 26 DTHR. CRANES LGTD. OCA/H FOR 2NDB APCH WITH FAF AND NDB (LOM) APCH WITH FAF ESTABLISHED: 317 (146)M.	A1243/17 ↑
UUWV MOSCOW FIR UUWV NONDIRECTIONAL RADIO BEACON OTHER - suppress From 2017-01-25 06:45 until 2017-04-27 23:59 ACFT ARR AT VNUKOVO AD DURING THE PERIOD 0600-1700 SHALL PLAN SUKHOTINO (IN) NDB CROSSING AT FL140-FL200.	A0283/17 ↑
UUWV DISTANCE MEASURING EQUIPMENT (DME) UNSERVICEABLE - suppress From 2017-04-05 09:00 until 2017-06-05 10:00 EST STARITSA DME KU 108.80 MHZ CH96X U/S DUE TO TECR.	A1363/17 ↑
UUWV VOR/DME UNSERVICEABLE - suppress From 2016-12-30 00:00 until PERM SAFONOVO DVORDME IMPLEMENTED. ID: SF FREQ: 116.3MHZ HR OF OPERATION: H24 COORD: 550430N 0331827E DME ELEVATION 260M. REF AIP BOOK 1 GEN 2.5-7, ENR 4.1.1-4, ENRC 3.	A6266/16 ↑
UUWV AERONAUTICAL INFORMATION SERVICE OTHER - suppress From 2017-04-12 07:00 until 2017-07-04 23:59 AIP BOOK 1 SUP 06/17 WEF 0000 UTC 01 JUN 2017 TILL 2359 UTC 04 JUL 2017 IS PUBLISHED. SUP 06/17 IS PLACED ON WEBSITE HTTP: WWW.CAICA.RU/ACCESS TO ON-LINE AERONAUTICAL INFORMATION AND DOWNLOAD FILES/INTEGRATED AERONAUTICAL INFORMATION PACKAGE OF THE RUSSIAN FEDERATION/AIP OF RUSSIA BOOK 1/ AIP SUP.	A1481/17 ↑
UUWV AERONAUTICAL INFORMATION SERVICE OTHER - suppress From 2016-02-21 10:40 until PERM AIC 01/16 ,, THE USE OF SIMFEROPOL FIR AIRSPACE,, HAS BEEN PUBLISHED. AIC 01/16 EFFECTIVE FROM 21 FEB 2016 IS PLACED ON WEB SITE HTTP: CAICA.RU/ACCESS TO ON-LINE AERONAUTICAL INFORMATION AND DOWNLOAD FILES/INTEGRATED AERONAUTICAL INFORMATION PACKAGE OF THE RUSSIAN FEDERATION/AIP OF RUSSIA BOOK 1/AIC.	A0598/16 ↑
UUWV RESTRICTED AREA ACTIVATED - suppress From 2017-04-10 00:00 until 2017-04-30 23:59, GND up to FL240 RESTRICTED AREA UUR206 ACT.	K3698/17 ↑
UUWV RESTRICTED AREA ACTIVATED - suppress From 2017-04-01 07:00 until 2017-04-30 17:00, 01-04 06-11 13-18 20-25 27-30 0700-1700, 05 12 19 26 0700-2100, FL100 up to 30000M AGL RESTRICTED AREA ACT: UUR215.	K3185/17 ↑
UUWV TEMPORARY RESTRICTED AREA ACTIVATED - suppress From 2017-04-13 06:00 until 2017-04-15 16:00, DAILY 0600-1600, SFC up to 500M AGL AIRSPACE CLSD WI AREA: 540400N0381500E-540400N0382400E-535400N0382400E- 535400N0381500E-540400N0381500E.	K3769/17 ↑

K3659/17

K3581/17

↑

K3562/17

↑

K3109/17

↑

K3107/17

↑

523800N0392600E.

A0142/17

↑

A1182/17

↑

A6223/16

OPERATORS AND ATIS: NR 2.15 CHANGED TO READ 2.17.

NOV 04.

EVERY SAT AND SUN ARE ALSO THE NONWORKING DAYS.
WORKING DAY DURATION IS ONE HOUR SHORTER ON: MAR 07, FEB 22,
NOV 03.
THE FEDERAL AIR TRANSPORT AGENCY RECOMMENDS USERS OF THE RUSSIAN
FEDERATION AIRSPACE TO TAKE THIS INFORMATION INTO ACCOUNT WHEN
PLANNING AND OPERATING FLIGHTS WITHIN THE RUSSIAN FEDERATION
AIRSPACE ON PUBLIC HOLIDAYS AND NONWORKING DAYS.
IN ORDER TO AVOID UNTIMELY SUBMITTING OF APPLICATIONS FOR
OPERATING FLIGHTS WITHIN THE RUSSIAN FEDERATION AIRSPACE
INCLUDING THE CHANGES TO FLIGHTS PERMITTED EARLIER (SINGLE,
SCHEDULED, ADDITIONAL AND OTHERS), IT IS RECOMMENDED TO FOLLOW
THE PROVISIONS OF AIP OF THE RUSSIAN FEDERATION.

↑

UUUU AERONAUTICAL INFORMATION SERVICE OTHER - [suppress](#)

A2538/15

From 2015-06-18 10:30 until PERM

AIC 03/15 -PROVISION OF TRANSIT TRAFFIC THROUGH THE RUSSIAN
FEDERATION AIRSPACE- HAS BEEN PUBLISHED. AIC 03/15 WILL BECOME
EFFECTIVE FM 18 JUN 2015.

AIC 03/15 PLACED ON WEBSITE HTTP:CAICA.RU/ACCESS TO ON-LINE
AERONAUTICAL INFORMATION AND DOWNLOAD FILES/INTEGRATED AERONAUTICAL
INFORMATION PACKAGE OF THE RUSSIAN FEDERATION/AIP OF RUSSIA
BOOK 1/AIC.

↑

UUUU OTHER - [suppress](#)

A0630/17

From 2017-02-26 00:00 until PERM

REF AIP BOOK 1 PAGE GEN 1.2-1, PARA 1.2 ENTRY, TRANSIT AND
DEPARTURE OF AIRCRAFT

ITEMS 2.2, 2.3, 2.4 AND 2.5 (11-TH AND 16-TH HYPHENS) TO READ:

2.2 FORM R SHALL BE FILLED IN BY FOREIGN AIRLINES EITHER IN
RUSSIAN OR IN ENGLISH SUBJECT FOR THEIR OWN CHOICE AND BY RUSSIAN
AIRLINES MANDATORILY IN RUSSIAN ON A4 FORMAT SHEETS IN 2 COPIES,
AND IN 1 COPY IN CASE OF SUBMISSION BY E-MAIL.

2.3 FORMS R TOGETHER WITH DOCUMENTS SHALL BE SUBMITTED NOT
LATER THAN 35 CALENDAR DAYS BEFORE BEGINNING OF FLIGHTS,
WHEN OPERATING SCHEDULED FLIGHTS OF THE FIRST, SECOND, THIRD,
FOURTH, FIFTH, SIXTH AND SEVENTH FREEDOM OF THE AIR, TO THE OPERATION
REGULATION DEPARTMENT OF THE FEDERAL AIR TRANSPORT AGENCY TO
FLW ADDRESS: 37, LENINGRADSKIY PROSPECT, MOSCOW, 125993, RUSSIAN
FEDERATION OR BY E-MAIL: RFORM(AT)SCAA.RU TO OPERATION REGULATION
DEPARTMENT OF THE FEDERAL AIR TRANSPORT AGENCY AND
RFORM(AT)MATFMC.RU TO MATMC (IN COPY), EXCEPT THE DOCUMENTS, LISTED
IN ITEM 2.2.1, POINTS 5 AND 19, SUCH DOCUMENTS SHALL BE SUBMITTED IN
THE ORIGINAL ONLY.

2.4 FORMS R SUBMITTED BY FAX, TELEX, AFTN AND SITA COMMUNICATION
CHANNELS OR BY OTHER COMMUNICATION CHANNELS NOT MENTIONED IN ITEM
2.3 AND ALSO WITH VIOLATION OF SUBMISSION TIME, SHALL NOT BE
ACCEPTED FOR CONSIDERATION.

2.5 (11-TH HYPHEN) -POSITION 11 SHALL INDICATE THE MAIN AND ALL
ALTERNATIVE TYPES OF ACFT WITH INDICATION OF THEIR MODIFICATIONS
ACCORDING TO ICAO CODES FOR TYPES OF ACFT.

(16-TH HYPHEN) -POSITION 17 OF FORM R SHALL BE SIGNED BY THE
EXECUTIVE OF THE AIRLINE.

↑

PRIORITY Priorité <<< FF >>>		ADDRESSEE(S) Destinataire(s)	
FILING TIME Heure de dépôt		ORIGINATOR Expéditeur	
SPECIFIC IDENTIFICATION OF ADDRESSEE(S) AND/OR ORIGINATOR Identification précise du(des) destinataire(s) et/ou de l'expéditeur			
3 MESSAGE TYPE Type de message <<< (FPL		7 AIRCRAFT IDENTIFICATION Identification de l'aéronef Z Z Z Z Z	
9 NUMBER Nombre 1		TYPE OF AIRCRAFT Type d'aéronef P 2 8 R	
13 DEPARTURE AERODROME Aérodrome de départ U U E E		TIME Heure 1 1 0 0	
15 CRUISING SPEED Vitesse croisière N 0 1 2 2		LEVEL Niveau V F R	
ROUTE Route DMD/N0122F130 IFR DCT US/N0110F040			
DCT IWV VFR			
16 DESTINATION AERODROME Aérodrome de destination U U O O			
18 OTHER INFORMATION Renseignements divers DOF/170413 PBN/B2D2		TOTAL EET Durée totale estimée HR MIN 0 2 2 9	
19 ENDURANCE Autonomie E / 0 5 5 9		PERSONS ON BOARD Personnes à bord P / T B N	
SURVIVAL EQUIPMENT/Équipement de survie DINGHIES/Canots 8 / P		JACKETS/Gilets de sauvetage R / UHF VHF ELT R / [X] [X] [E]	
POLAR Polaire D		DESERT Désert M	
MARITIME Maritime J		JUNGLE Jungle L	
LIGHT Lampes F		FLUORES Fluores U	
UHF V		VHF V	
NUMBER Nombre 1		CAPACITY Capacité C	
COVER Couverture C		COLOUR Couleur WHITE BLUE STRIPES	
REMARKS Remarques A /			
PILOT-IN-COMMAND Pilote commandant de bord C /			
FILED BY / Déposé par			
SPACE RESERVED FOR ADDITIONAL REQUIREMENTS Espace réservé à des fins supplémentaires			

A Additional NOTAM

Departure UUEE SHEREMETYEVO

UUEE GNSS AIRFIELD-SPECIFIC OPERATIONS NOT AVAILABLE - [suppress](#)

A0357/17

From 2017-01-30 13:00 until 2017-04-27 20:59 EST

RWY 06L/24R AND RWY 06R/24L: GLS APCH SHALL NOT BE USED.

↑

UUBW RAMENSKOYE

UUBW PRECISION APPROACH RADAR (PAR) UNSERVICEABLE - [suppress](#)

A0701/17

From 2017-02-28 07:00 until 2017-04-30 21:00 EST

RWY 12/30: PAR U/S. PAR APCH NOT AVBL.

↑

UUBW AERODROME HOURS OF SERVICE - [suppress](#)

A0995/17

From 2017-04-01 04:00 until 2017-06-30 19:30 EST

AD OPR HR: DAILY 0400-1930.

ARR/DEP OUTSIDE OPR HR BY PRIOR COORDINATION.

NOTAM A5048/16 SUSPENDED DURING VALIDITY OF THIS NOTAM.

↑

UUBW AERODROME HOURS OF SERVICE - [suppress](#)

A5048/16

From 2016-11-01 00:00 until PERM

AD OPR HR: DAILY 0200-2100.

ARR/DEP OUTSIDE OPR HR BY PRIOR COORDINATION.

REF AIP BOOK 1 SUPPLEMENT 07/16 PAGE AD 2.1 UUBW-1.

↑

UUBW BEARING STRENGTH CHANGED - [suppress](#)

A6066/16

From 2016-12-29 00:00 until PERM

APRON, TWY AND CHECK LOCATION DATA.

TABLE AD 2.8 PARAGRAPH 2 CHANGED TO READ:

TWY:

A2 - 75M. CONCRETE PCN 71/R/B/W/T,

MAIN TWY B5-40.5M. CONCRETE PCN 68/R/B/W/T,

B5A - 40.5M. CONCRETE PCN 68/R/B/W/T,

B7 - 63M. ASPHALT-CONCRETE PCN 87/R/B/X/T,

B9 - 40.5M. CONCRETE PCN 65/R/B/W/T,

B10 - 40.5M. ASPHALT-CONCRETE PCN 54/R/B/W/T.

REF AIP BOOK 1 AD 2.1 UUBW-3, 39.

↑

UUBW DECLARED DISTANCES CHANGED - [suppress](#)

A6278/16

From 2016-12-29 00:00 until PERM

REF AIP BOOK 1 PAGE AD 2.1 UUBW-6 TABLE AD 2.13

DECLARED DISTANCES:

TORA TODA ASDA LDA REMARKS

RWY 12 4600 4750 4600 4600 NIL

FROM TWY B7 4400 4550 4400 - NIL

FROM TWY B9 3300 3450 3300 - NIL

FROM TWY B10 2340 2490 2340 - NIL

RWY 30 4600 4900 4600 4600 NIL

FROM TWY B5A 3380 3680 3380 - NIL

FROM TWY B10 2300 2600 2300 - NIL

FROM TWY B9 1340 1640 1340 - NIL.

↑

UUBW TAXIWAY(S) COMPLETELY WITHDRAWN - [suppress](#)

A6065/16

From 2016-12-29 00:00 until PERM

TWY B5B AND MAIN TWY B5 SEGMENT FROM TWY B5A TO TWY B5B

WITHDRAWN.

REF AIP BOOK 1 AD 2.1 UUBV-31, 32, 39.

↑

UUBW TAXIWAY(S) OTHER - [suppress](#)

A6064/16

From 2016-12-29 00:00 until PERM

TWY B9, B10, B5A, MAIN TWY B5 SEGMENT FM TWY B7 TO TWY B5A OPEN

AFTER TWY RECONSTRUCTION. REF AIP BOOK 1 AD 2.1 UUBW- 31, 32, 39, 40.	↑
UUBW AERODROME CONTROL TOWER (TWR) OTHER - suppress From 2016-12-09 00:00 until PERM REF AIP BOOK 1 PAGE AD 2.1 UUBW-7 TABLE AD 2.17 AIR TRAFFIC SERVICES AIRSPACE: GORDY-KRUG, RULENIE AVBL IN RUSSIAN AND ENGLISH LANGUAGES. SERVICE IN ENGLISH PROVIDED BY PRIOR CO-ORDINATION.	A5833/16 ↑
UUOL LIPETSK	
UUOL HELIPORT LIMITED - suppress From 2016-11-21 06:50 until 2017-06-01 21:00 EST HEL STANDS 23, 24, 25, 26 CLSD.	A5520/16 ↑
UUOL AIRCRAFT STANDS CLOSED - suppress From 2016-12-06 12:00 until PERM ACFT STAND 4 AVBL FOR PARKING OF HEL MI-8 AND LOWER CLASS HEL. REF AIP BOOK 1 PAGE AD 2.1 UUOL-39.	A5820/16 ↑
UUOL AIRCRAFT STANDS OTHER - suppress From 2015-12-02 11:30 until PERM STANDS 1, 2, 3 AVBL FOR PARKING OF ACFT TYPES ATR-72, CRJ-200. STAND 4 NOT AVBL FOR PARKING OF ACFT TYPES ATR-72, CRJ-200. REF AIP AD 2.1 UUOL-39.	A5486/15 ↑
UUOL AIRCRAFT STANDS COMPLETELY WITHDRAWN - suppress From 2015-10-23 16:00 until PERM STANDS 7, 8, 9, 10, 11, 12, 13, 14, 15, 16, 17, 18, 19, 20, 21, 22, 27, 28 WITHDRAWN. REF AIP AD 2.1 UUOL-39.	A4820/15 ↑
UUOL RUNWAY COMPLETELY WITHDRAWN - suppress From 2016-12-13 16:00 until PERM GRASS RWY 05/23 COMPLETELY WITHDRAWN. REF AIP BOOK 1 PAGE AD 2.1 UUOL-31,39.	A5955/16 ↑
UUOL THRESHOLD DISPLACED - suppress From 2016-11-21 06:50 until 2017-06-01 23:59 EST RWY 33 THR DISPLACED BY 150M TOWARDS ARP, DAY MARKING AND RED RENL AT NGT PROVIDED. RWY 15/33 LEN 2043X45M. EQPT UP TO 3M HGT OPR AT RWY 33 THR IN THE DAY-TIME. RWY 33 LDG AT NIGHT PROHIBITED. DTHR COORD N524142.69 E0393233.41 (PZ-90.02), ELEV 174.0M LOM LCA AT DIST 3922M FROM DTHR, LOM CROSSING HGT (225)M. LMM LCA AT DIST 1049M FROM DTHR, LMM CROSSING HGT (70)M. RWY 33 OCA/H FOR ACFT CAT A B C D: 2 NDB WITH FAF 980(125)M WO FAF 1280(220)M, NDB (LOM) WITH FAF 980(125)M WO FAF 1280(220)M, NDB (LMM) WITH FAF FOR ACFT CAT A B 980(125)M, FOR ACFT CAT C D 1160(180)M, NDB (LMM) WO FAF FOR ACFT CAT A B 1280(220)M, FOR ACFT CAT C D 1460(275)M. DECLARED DISTANCES: RWY 15: TORA 2043, ASDA 2043, TODA 2043, LDA 2043. RWY 33: TORA 2043, ASDA 2043, TODA 2293, LDA 2043. 2. RWY 33: ILS U/S, 2NDB APCH AVBL.	A5521/16 ↑
UUOL OBSTACLE ERECTED - suppress From 2016-12-26 14:50 until 2017-06-30 21:00 EST	A6287/16

TWR CONST IN PROGRESS WI SECTOR AZM 210-220 DEG AT DIST 460M FROM ARP. EQPT OPR HGT UP TO 28M.

↑

UUOL OBSTACLE ERECTED - [suppress](#)

A5800/16

From 2016-12-05 16:00 until PERM

TWO LIGHTING MASTS INSTALLED AT AD.

MAST 1: COORD [524143.17N 0393207.56E](#) AZM 175 DEG,
DIST 887M FROM ARP, ALT 191M.

MAST 2: COORD [524142.89N 0393210.19E](#), AZM 173 DEG,
DIST 888M FROM ARP, ALT 191M,
DAY AND NIGHT MARKING PROVIDED.

REF AIP BOOK 1 PAGE AD 2.1 UUOL-4.31.

↑

UUWW VNUKOVO

UUWW AIR/GROUND INSTALLED - [suppress](#)

A0883/17

From 2017-04-03 06:00 until PERM

DEPARTURE HANDLING POST ,,VNUKOVO-DELIVERY,, ON FREQ 129.7MHZ

PUT INTO OPERATION ON APRON OF VNUKOVO III, AND APRONS 1, 2, 3, 4
OF VNUKOVO III.

REF AIP BOOK 1 PAGE AD 2.1 UUWW-8, 11, 31.

↑

UUWW AERODROME OTHER - [suppress](#)

A0282/17

From 2017-01-25 06:45 until 2017-04-27 23:59

ACFT ARR AT VNUKOVO AD DURING THE PERIOD 0600-1700

SHALL PLAN SUKHOTINO (IN) NDB CROSSING AT FL140-FL200.

↑

UUWW AERODROME OTHER - [suppress](#)

A6116/16

From 2016-12-20 08:00 until 2017-06-30 21:00

DUE TO RECONSTRUCTION AD AVBL AS ALTN FOR ACFT OF AIRLINES HAVING
GENERAL AGREEMENT ON RENDERING OF AIRPORT SERVICES.

↑

UUWW AERODROME OTHER - [suppress](#)

A6115/16

From 2016-12-20 07:55 until 2017-06-30 21:00

NIGHT MARKING NOT PROVIDED ON TWY A1, C1, C2, C3, C4, C5, C9.

DRG HOURS OF DARKNESS AND DRG DAYLIGHT HOURS WHEN VISIBILITY LESS
THAN 2000M ACFT TAX CARRIED OUT AFTER FOLLOW-ME CAR.

↑

UUWW AERODROME OTHER - [suppress](#)

A5356/16

From 2016-11-10 13:40 until 2017-06-30 21:00

PRIOR TO REQUESTING ATC CLEARANCE ACFT CREW MUST SET MODE

,,ALTITUDE OFF,, AND FLT NUMBER IN THE TRANSPONDER BEFORE RWY
HOLDING POSITION.

AFTER RWY VACATION ACFT CREW SHALL SET MODE ,, ALTITUDE OFF,, IN
THE TRANSPONDER BEFORE PARKING.

↑

UUWW ILS CATEGORY III UNSERVICEABLE - [suppress](#)

A6117/16

From 2016-12-20 08:00 until 2017-06-30 21:00

RWY 06/24 ILS DME: CAT IIIA APCH NOT AVBL.

↑

UUWW MOVEMENT AREA OTHER - [suppress](#)

A6118/16

From 2016-12-20 08:00 until 2017-06-30 21:00

RWY 24:

- TKOF OF BOEING 767 AND LOWER CLASS ACFT CARRIED OUT FROM TWY A3,
A5,

- TKOF OF BOEING 767 AND HIGHER CLASS ACFT CARRIED OUT FROM TWY A2
DUE TO RECONSTRUCTION OF VNUKOVO I APRON AND RESTRICTIONS OF
TAXIING TO TWY A2.

↑

UUWW STOP BAR CLOSED - [suppress](#)

A6113/16

From 2016-12-20 07:45 until 2017-06-30 21:00

TWY A4 STOP BARS U/S.
WHEN RWY 06/24 IS IN USE AND VIS IS LESS THAN 350M ACFT TAX CARRIED
OUT AFTER FOLLOW-ME CAR.

↑

UUWW STOP BAR CLOSED - [suppress](#)

A6112/16

From 2016-12-20 07:40 until 2017-06-30 21:00

RWY 01/19: STOP BAR LGT IN FRONT OF RWY 06/24 INT OUT OF SERVICE.

↑

UUWW TAXIWAY(S) CLOSED - [suppress](#)

A1406/17

From 2017-04-10 08:00 until 2017-04-16 15:00, DAILY 0800-1500

1. TWY M2 SEGMENT FROM TWY A13 TO TWY A10 CLSD FOR TAX AND
TOWING OF ACFT.

2. TWY A11 CLSD FOR TAX AND TOWING OF ACFT.

3. TWY A9, A10, A11, A13, M2 LGT (INCLUDING STOP BAR LGT) U/S.

↑

UUWW TAXIWAY(S) CLOSED - [suppress](#)

A1104/17

From 2017-03-22 14:25 until 2017-04-22 21:00

TWY A5 SEGMENT BTN TWY M3 AND VNUKOVO 1 APN CLSD FOR TAX/TOWING.

↑

UUWW TAXIWAY(S) LIMITED - [suppress](#)

A6110/16

From 2016-12-20 07:35 until 2017-06-30 21:00

TWY B6 AVBL FOR TAXIING OF BOEING 737 AND LOWER CLASS ACFT.

TAX CARRIED OUT AFTER FOLLOW-ME CAR ONLY.

↑

UUWW TAXIWAY(S) CLOSED - [suppress](#)

A6109/16

From 2016-12-20 07:35 until 2017-06-30 21:00

TWY A12 CLSD FOR ACFT TAXIING AND TOWING.

TAXIING AND TOWING OF ALL ACFT TYPES VIA TWY A13 AND SEGMENT OF
TWY M2 FROM TWY A13 TO TWY C6 CARRIED OUT ONLY DURING DAY-LIGHT
HOURS UNDER VIS MORE THAN 2000M.

↑

UUWW OBSTACLE ERECTED - [suppress](#)

A6119/16

From 2016-12-20 08:05 until 2017-06-30 21:00

NINE CONSTRUCTION CRANES DEPLOYED AT DIST 246M FM THR 19 AND 1015M
TO THE RIGHT (NORTH) FM RWY CL. ALT 258M. COORD [553704N0371550E](#).

↑

UUWW PROHIBITED AREA OTHER - [suppress](#)

A0978/17

From 2017-03-16 08:00 until PERM, GND up to 300M AGL

REF AIP BOOK 1 PAGE AD 2.1 UUWW-55/56

FLW PROHIBITED AREAS ADDED:

1. UUP78: CIRCLE RADIUS 0.7 KM CENTRED [553452N 0373111E](#),
VERTICAL LIMITS GND - 300M AGL,
TIME OF ACTIVITY H24.

2. UUP79: CIRCLE RADIUS 0.4 KM CENTRED [545123N 0381525E](#),
VERTICAL LIMITS GND - 450M AMSL,
TIME OF ACTIVITY H24.

↑

UUWW PROHIBITED AREA CHANGED - [suppress](#)

A0977/17

From 2017-03-16 08:00 until PERM, GND up to 300M AGL

REF AIP BOOK 1 PAGE AD 2.1 UUWW-69/70, 71, 73/74, 75, 87/88,
89/90, 91/92, 93, 97/98, 99/100, 101/102, 103, 105/106, 107/108,
109/110, 119/120, 121, 123/124, 125, 127, 129/130, 131/132, 133,
135/136, 137/138, 139 PROHIBITED AREA UUP78 ADDED AS FLW:

A CIRCLE RADIUS 0.7KM CENTRED [553452N 0373111E](#), VERTICAL LIMITS
FROM SFC TO 300M AGL, TIME OF ACTIVITY H24.

↑

UUWV MOSCOW FIR

UUWV ATS ROUTE CLOSED - [suppress](#)

K3708/17

From 2017-04-11 06:30 until 2017-04-13 15:30, DAILY 0630-1530

ATS RTE SEGMENTS CLSD:

B239 OBELU - POCHINOK NDB (DB)
B714 RUNEP - STARITSA NDB (AJ)
G723 GAPSA - RISOP
R369 BELAG - STARITSA NDB (AJ)
R804 OLIDI - PENUR.
SFC-4000M AGL

↑

UUWV ATS ROUTE CLOSED - [suppress](#)

K2324/17

From 2017-03-02 06:00 until 2017-04-26 23:59 EST

IN ORDER TO ENSURE SAFETY OF INTL OPS FLW ATS RTE SEGMENTS CLSD:

1. GND-FL200 (INCL):

A493 LIRSI-LEMBO,
G915 AGNIN-FORMA,
A131 BODRO-FORMA,
A236 LULED-LUMAT,
R371 LUMAT-LEMBO,
R371 BELIB-KUBOK,
G372 BODRO-BELIB,
A97 TUMIT-NALEG,
R363 ANIGI-KUBOK,
R368 SOMUM-KUBOK,
A279 RASAP-KUBOK,
R374 TUMIT-KANON,
B231 TERBUNY NDB (TE)-KANON,
R808 VORONEZH/CHERTOVITSKOYE VORDME (IWV)-KANON,
B145 BUTRI-KANON.

2. GND - ALL FL

A954 GOBUN-GIKEK,
B110 RASAP-GOBUN,
G476 RASAP-MASOL.

↑

UUWV RESTRICTED AREA ACTIVATED - [suppress](#)

K3846/17

From 2017-04-13 04:00 until 2017-04-29 15:00, 13 20 27 0400-2100, 14 17-19 21 24-26 28 0400-1700, 15 22 29 0400-1500,
GND up to 1850M AGL

RESTRICTED AREA ACT: UUR449.

↑

UUWV RESTRICTED AREA ACTIVATED - [suppress](#)

K3844/17

From 2017-04-12 09:00 until 2017-04-29 15:00, 12 0900-2100, 13 14 17-21 24-28 0400-2100, 15 22 29 0400-1500, FL060 up to
FL400

RESTRICTED AREA ACT: UUR269.

↑

UUWV RESTRICTED AREA ACTIVATED - [suppress](#)

K3843/17

From 2017-04-12 09:00 until 2017-04-29 15:00, 12 0900-2100, 13 14 17-21 24-28 0400-2100, 15 22 29 0400-1500, SFC up to
3050M AGL

RESTRICTED AREA ACT: UUR417.

↑

UUWV RESTRICTED AREA ACTIVATED - [suppress](#)

K3395/17

From 2017-04-01 00:00 until 2017-04-29 23:59, DAILY 0000-2359 EXC SUN, GND up to FL160

RESTRICTED AREA UUR204 ACT.

↑

UUWV RESTRICTED AREA ACTIVATED - [suppress](#)

K3350/17

From 2017-04-01 01:10 until 2017-04-29 20:00, 01 03-08 10-15 17-22 24-29 0110-2000, 700M AGL up to FL260

RESTRICTED AREA ACT: UUR203.

↑

UUWV RESTRICTED AREA ACTIVATED - [suppress](#)

K3285/17

From 2017-04-01 02:00 until 2017-04-29 21:00, 01 03-08 10-15 17-22 24-29 0200-2100, FL040 up to FL140

RESTRICTED AREA ACT: UUR240.

↑

UUWV RESTRICTED AREA ACTIVATED - [suppress](#)

K3207/17

From 2017-04-01 00:00 until 2017-04-29 17:00, 01 08 15 22 29 0000-1700, 03-07 10-14 17-21 24-28 0000-2359, FL100 up to
FL400

RESTRICTED AREA ACT: UUR245.

↑

UUWV RESTRICTED AREA ACTIVATED - suppress From 2017-04-01 07:00 until 2017-04-30 13:00, DAILY 0700-1300, GND up to 3000M AGL RESTRICTED AREA ACT: UUR390.	K3186/17 ↑
UUWV RESTRICTED AREA ACTIVATED - suppress From 2017-04-03 06:00 until 2017-04-28 23:00, 03-07 10-14 17-21 24-28 0600-2300, SFC up to 4000M AGL RESTRICTED AREA ACT: UUR341.	K3179/17 ↑
UUWV RESTRICTED AREA ACTIVATED - suppress From 2017-04-03 06:00 until 2017-04-28 21:00, 03-07 10-14 17-21 24-28 0600-2100, GND up to FL100 RESTRICTED AREA ACT: UUR408.	K3156/17 ↑
UUWV RESTRICTED AREA ACTIVATED - suppress From 2017-04-03 06:00 until 2017-04-28 21:00, 03-07 10-14 17-21 24-28 0600-2100, 400M AGL up to FL040 RESTRICTED AREA ACT: UUR422.	K3154/17 ↑
UUWV RESTRICTED AREA ACTIVATED - suppress From 2017-04-03 06:00 until 2017-04-28 21:00, 03-07 10-14 17-21 24-28 0600-2100, FL040 up to FL100 RESTRICTED AREA ACT: UUR230.	K3152/17 ↑
UUWV RESTRICTED AREA ACTIVATED - suppress From 2017-04-01 06:30 until 2017-04-30 22:00, DAILY 0630-2200, FL100 up to 30000M AGL RESTRICTED AREA ACT: UUR219.	K3134/17 ↑
UUWV RESTRICTED AREA ACTIVATED - suppress From 2017-04-01 00:00 until 2017-04-29 23:59, 01 03-08 10-15 17-22 24-29 0000-2359, GND up to FL260 RESTRICTED AREA UUR389 ACT.	K3106/17 ↑
UUWV RESTRICTED AREA ACTIVATED - suppress From 2017-04-01 00:00 until 2017-04-29 23:59, 01 03-08 10-15 17-22 24-29 0000-2359, GND up to FL260 RESTRICTED AREA UUR235 ACT. THESE RESTRICTIONS NOT AFFECT ATS RTE A928.	K3103/17 ↑
UUWV RESTRICTED AREA ACTIVATED - suppress From 2017-04-01 00:00 until 2017-04-29 23:59, 01 03-08 10-15 17-22 24-29 0000-2359, FL070 up to FL260 RESTRICTED AREA UUR236 ACT.	K3101/17 ↑
UUWV RESTRICTED AREA ACTIVATED - suppress From 2017-04-01 06:00 until 2017-04-29 11:00, SFC up to FL060 01 03-08 10-15 17-22 24-29 0600-1100, 03-07 10-14 17-21 24-28 1500-2100 RESTRICTED AREA ACT: UUR344.	K3054/17 ↑
UUWV RESTRICTED AREA ACTIVATED - suppress From 2017-04-01 18:00 until 2017-05-01 03:00, DAILY 1800-0300, GND up to 6500M AGL RESTRICTED AREA ACT: UUR366.	K3051/17 ↑
UUWV RESTRICTED AREA ACTIVATED - suppress From 2017-04-03 03:00 until 2017-04-28 23:00, 03-07 10-14 17-21 24-28 0300-2300, GND up to 1000M AGL RESTRICTED AREA ACT: UUR438.	K2970/17 ↑
UUWV RESTRICTED AREA ACTIVATED - suppress From 2017-04-01 07:00 until 2017-04-30 17:00, 01 02 07-09 14-16 21-23 28-30 0700-1700, FL040 up to FL130 RESTRICTED AREA UUR342 ACT.	K2901/17 ↑
UUWV RESTRICTED AREA ACTIVATED - suppress From 2017-04-03 06:00 until 2017-04-28 23:00, 03-07 10-14 17-21 24-28 0600-2300, GND up to 600M AGL RESTRICTED AREA ACT: UUR440.	K2757/17 ↑

UUVV RESTRICTED AREA ACTIVATED - suppress From 2017-04-03 05:00 until 2017-04-28 21:00, 03-07 10-14 17-21 24-28 0500-2100, GND up to 1500M AGL RESTRICTED AREA ACT: UUR424.	K2751/17 ↑
UUVV TEMPORARY RESTRICTED AREA ACTIVATED - suppress From 2017-04-13 06:00 until 2017-04-15 16:00, 13-15 0600-1600, GND up to 500M AGL AIRSPACE CLSD WI AREA: 540100N0380000E - 540100N0380600E - 535600N0381000E - 535400N0375900E -540100N0380000E.	K3771/17 ↑
UUVV TEMPORARY RESTRICTED AREA ACTIVATED - suppress From 2017-04-12 08:30 until 2017-04-15 17:00, DAILY 0830-1700, SFC up to 700M AGL AIRSPACE CLSD AS FLW: 1. WI 2KM EITHER SIDE OF LINE JOINING POINTS: 514900N0395400E - 514600N0394600E - 513600N0393800E - 513700N0395300E - 513200N0400500E - 513500N0401300E - 513000N0402600E -513500N0401300E- 514400N0403000E - 514400N0404400E - 514800N0404800E 450M AGL-700M AGL. 2. WI CIRCLE RADIUS 0.5KM CENTRE 513600N0401100E SFC-700M AGL.	K3756/17 ↑
UUVV TEMPORARY RESTRICTED AREA ACTIVATED - suppress From 2017-04-11 09:00 until 2017-04-13 15:00, DAILY 0900-1500, SFC up to 400M AGL AIRSPACE CLSD WI CIRCLE RADIUS 2KM CENTRE 544100N0384600E	K3673/17 ↑
UUVV TEMPORARY RESTRICTED AREA ACTIVATED - suppress From 2017-04-13 06:00 until 2017-04-15 17:00, DAILY 0600-1700, SFC up to 900M AGL AIRSPACE CLSD WI CIRCLE RADIUS 4KM CENTRE 520700N0383700E .	K3661/17 ↑
UUVV TEMPORARY RESTRICTED AREA ACTIVATED - suppress From 2017-04-13 06:00 until 2017-04-14 13:00, DAILY 0600-1300, SFC up to 100M AGL AIRSPACE CLSD WI CIRCLE RADIUS 1KM CENTRE 554320N0375520E .	K3616/17 ↑
UUVV TEMPORARY RESTRICTED AREA ACTIVATED - suppress From 2017-04-11 10:00 until 2017-04-14 14:00, 11 14 1000-1400, GND up to 300M AGL AIRSPACE CLSD WI AREA: 553600N0360300E - 554000N0362000E - 553700N0362300E - 553300N0360600E -553600N0360300E.	K3608/17 ↑
UUVV TEMPORARY RESTRICTED AREA ACTIVATED - suppress From 2017-04-10 06:32 until 2017-04-14 07:27, 10 12 14 0632-0727, SFC up to FL050 AIRSPACE CLSD WI 5KM EITHER SIDE OF LINE JOINING POINTS: 552629N0421845E - 554810N0414430E - 570545N0392325E - 573100N0381900E - 573700N0365100E - 572100N0360300E - 571200N0361000E .	K3569/17 ↑
UUVV TEMPORARY RESTRICTED AREA ACTIVATED - suppress From 2017-04-10 06:26 until 2017-04-14 07:16, 10-14 0626-0716, SFC up to FL050 AIRSPACE CLSD WI 5KM EITHER SIDE OF LINE JOINING POINTS: 523549N0393640E - 541200N0373500E - 543157N0361454E - 544422N0351332E - 544900N0351000E .	K3566/17 ↑
UUVV TEMPORARY RESTRICTED AREA ACTIVATED - suppress From 2017-04-10 06:20 until 2017-04-14 07:23, 10-14 0620-0723, SFC up to FL050 AIRSPACE CLSD WI 5KM EITHER SIDE OF LINE JOINING POINTS: 504922N0403600E - 525400N0400030E - 543830N0393419E - 553245N0400030E - 555530N0392740E - 563100N0385000E - 563100N0383700E .	K3565/17 ↑
UUVV TEMPORARY RESTRICTED AREA ACTIVATED - suppress From 2017-04-10 06:03 until 2017-04-14 07:16, 10-14 0603-0716, SFC up to FL050 AIRSPACE CLSD WI 5KM EITHER SIDE OF LINE JOINING POINTS: 523549N0393640E - 530900N0380700E - 540533N0351943E - 551900N0340400E - 553900N0340900E .	K3563/17 ↑

UUVV TEMPORARY RESTRICTED AREA ACTIVATED - suppress From 2017-04-13 06:00 until 2017-04-15 23:00, 13-15 0600-2300, SFC up to 900M AGL AIRSPACE CLSD WI AREA: 550400N0384200E - 545700N0384500E - 545200N0383300E - 545700N0383000E -55020 ON0382500E- 550700N0382100E - 550800N0382700E - 550900N0383300E -550400N038 4200E.	K3549/17
	↑
UUVV TEMPORARY RESTRICTED AREA ACTIVATED - suppress From 2017-04-03 06:00 until 2017-04-28 21:00, 03-07 10-14 17-21 24-28 0600-2100, 900M AGL up to FL050 AIRSPACE CLSD WI 5KM EITHER SIDE OF LINE JOINING POINTS: 553700N0363900E - 560500N0364800E - 554300N0353300E -553700N0363900E- 554300N0353300E- 551200N0352700E -553700N0363900E- 545700N0361000E - 551200N0352700E-553700N0363900E.	K3172/17
	↑
UUVV TEMPORARY RESTRICTED AREA ACTIVATED - suppress From 2017-04-03 06:00 until 2017-04-28 21:00, 03-07 10-14 17-21 24-28 0600-2100, FL040 up to FL050 AIRSPACE CLSD WI 5KM EITHER SIDE OF LINE JOINING POINTS: 553100N0362600E - 551900N0353700E - 545500N0354700E - 545800N0361000E .	K3169/17
	↑
UUVV TEMPORARY RESTRICTED AREA ACTIVATED - suppress From 2017-04-03 06:00 until 2017-04-28 21:00, 03-07 10-14 17-21 24-28 0600-2100, FL040 up to FL050 AIRSPACE CLSD WI 5KM EITHER SIDE OF LINE JOINING POINTS: 553100N0362600E - 551900N0353700E - 551700N0351200E - 545500N0354700E - 545800N0361000E .	K3166/17
	↑
UUVV TEMPORARY RESTRICTED AREA ACTIVATED - suppress From 2017-04-01 00:00 until 2017-04-29 23:59, 01 03-08 10-15 17-22 24-29 0000-2359, 900M AGL up to 1200M AGL AIRSPACE CLSD WI 5KM EITHER SIDE OF LINE JOINING POINTS: 513400N0384400E - 513300N0391500E - 513000N0393300E - 511000N0392600E - 504100N0390800E - 504300N0381300E -513400N0384400E.	K3108/17
	↑
UUVV PARACHUTE JUMPING EXERCISE (PJE), PARAGLIDING OR HANG GLIDING WILL TAKE PLACE - suppress K3410/17 From 2017-04-01 06:00 until 2017-04-20 19:00, DAILY 0600-1900, SFC up to 4500M AGL PJE TAKE PLACE WI CIRCLE RADIUS 5KM CENTRE 553900N0360800E .	K3410/17
	↑
UUVV PARACHUTE JUMPING EXERCISE (PJE), PARAGLIDING OR HANG GLIDING WILL TAKE PLACE - suppress K3333/17 From 2017-04-01 06:00 until 2017-04-20 19:00, DAILY 0600-1900, SFC up to FL040 NAVIGATIONAL WARNING: PARACHUTE JUMPS (PARADROP) WI AIRSPACE: CIRCLE RADIUS 5KM CENTRE 553900N0360800E .	K3333/17
	↑