

LKVO  
VODOCHODY

23 MAR 12  
10-2  
EFF 5 Apr

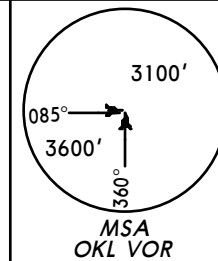
VODOCHODY, CZECH  
RNAV STAR

ATIS  
123.02

\*RUZYNE Radar  
119.0

Apt Elev  
919'

Alt Set: hPa (MM on request)  
Trans level: By ATC Trans alt: 5000'  
At initial contact with RUZYNE Radar state only call sign.



GOLP ONE ZULU  
(GOLP 1Z) [GOLP1Z]  
LOMKI ONE ZULU  
(LOMKI 1Z) [LOMK1Z]  
RWY 28 RNAV ARRIVALS  
P-RNAV REQUIRED

Direct distance  
from OKL to:  
Vodochody Apt 9NM  
from SULOV to:  
Vodochody Apt 8NM

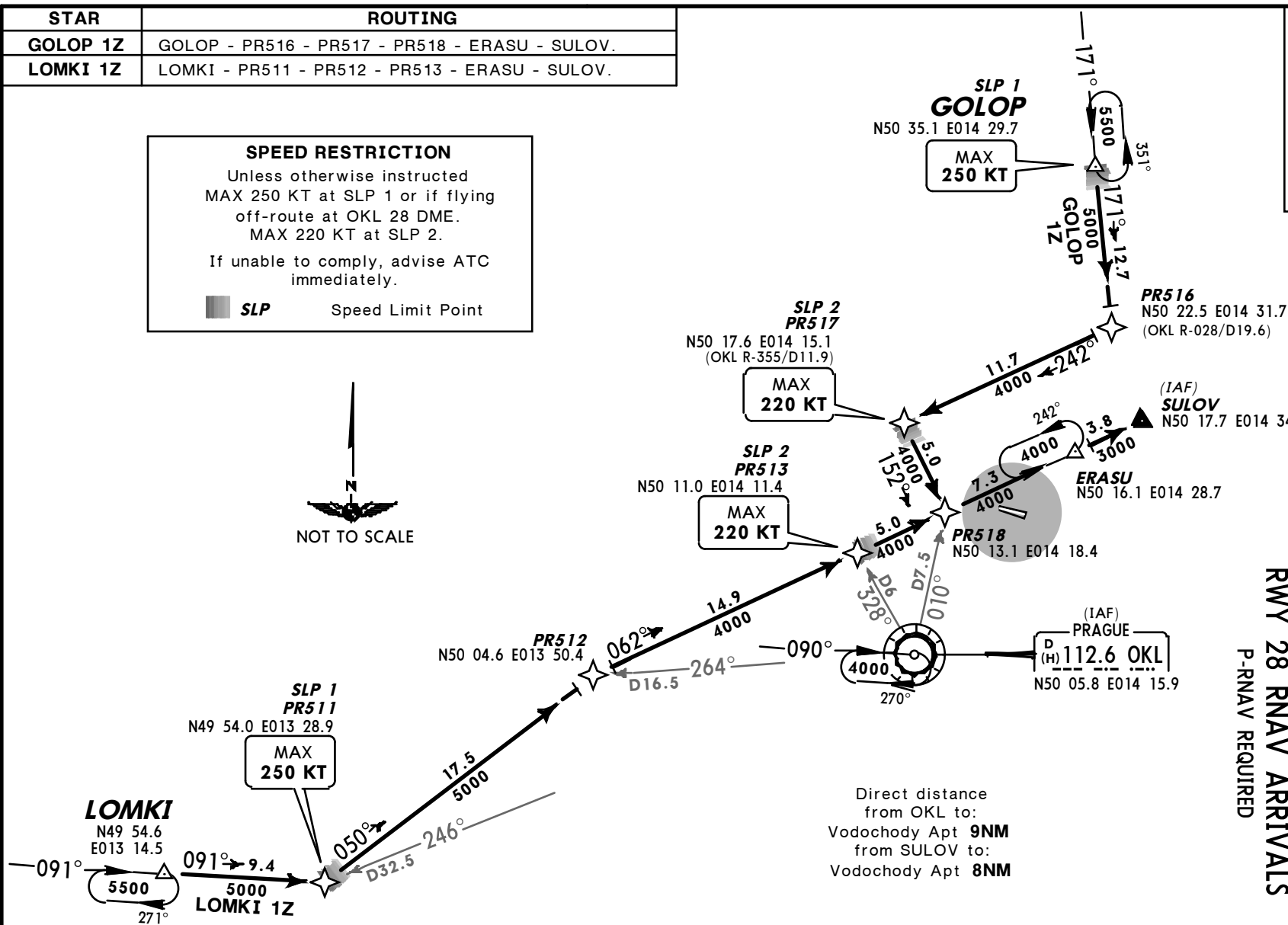
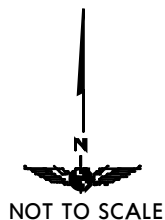
STAR	ROUTING
<b>GOLOP 1Z</b>	GOLOP - PR516 - PR517 - PR518 - ERASU - SULOV.
<b>LOMKI 1Z</b>	LOMKI - PR511 - PR512 - PR513 - ERASU - SULOV.

### SPEED RESTRICTION

Unless otherwise instructed  
MAX 250 KT at SLP 1 or if flying  
off-route at OKL 28 DME.  
MAX 220 KT at SLP 2.

If unable to comply, advise ATC  
immediately.

**SLP** Speed Limit Point



CHANGES: ATIS.

© JEPPESEN, 2002, 2012. ALL RIGHTS RESERVED.