

# KCMA ->KMRY - Overview

NavData Cycle 2012-3 Expired: Thursday, 05 April 2012.

Scale: 1:1344380 (1 inch = 18.46 naut mi). Printed on 20 Apr 2012 at 04:20PM.

**JEPPESEN**

**FliteMap 9.5.5.0**





# KMRY -> KOAK - Overview

NavData Cycle 2012-3 Expired: Thursday, 05 April 2012.

Scale: 1:512422 (1 inch = 7.04 naut mi). Printed on 20 Apr 2012 at 04:20PM.

**JEPPesen**

**FliteMap 9.5.5.0**



**Scale: 1:356107 (1 inch = 4.89 naut mi). Printed on 20 Apr 2012 at 04:20PM.**

## *FliteMap 9.5.5.0*





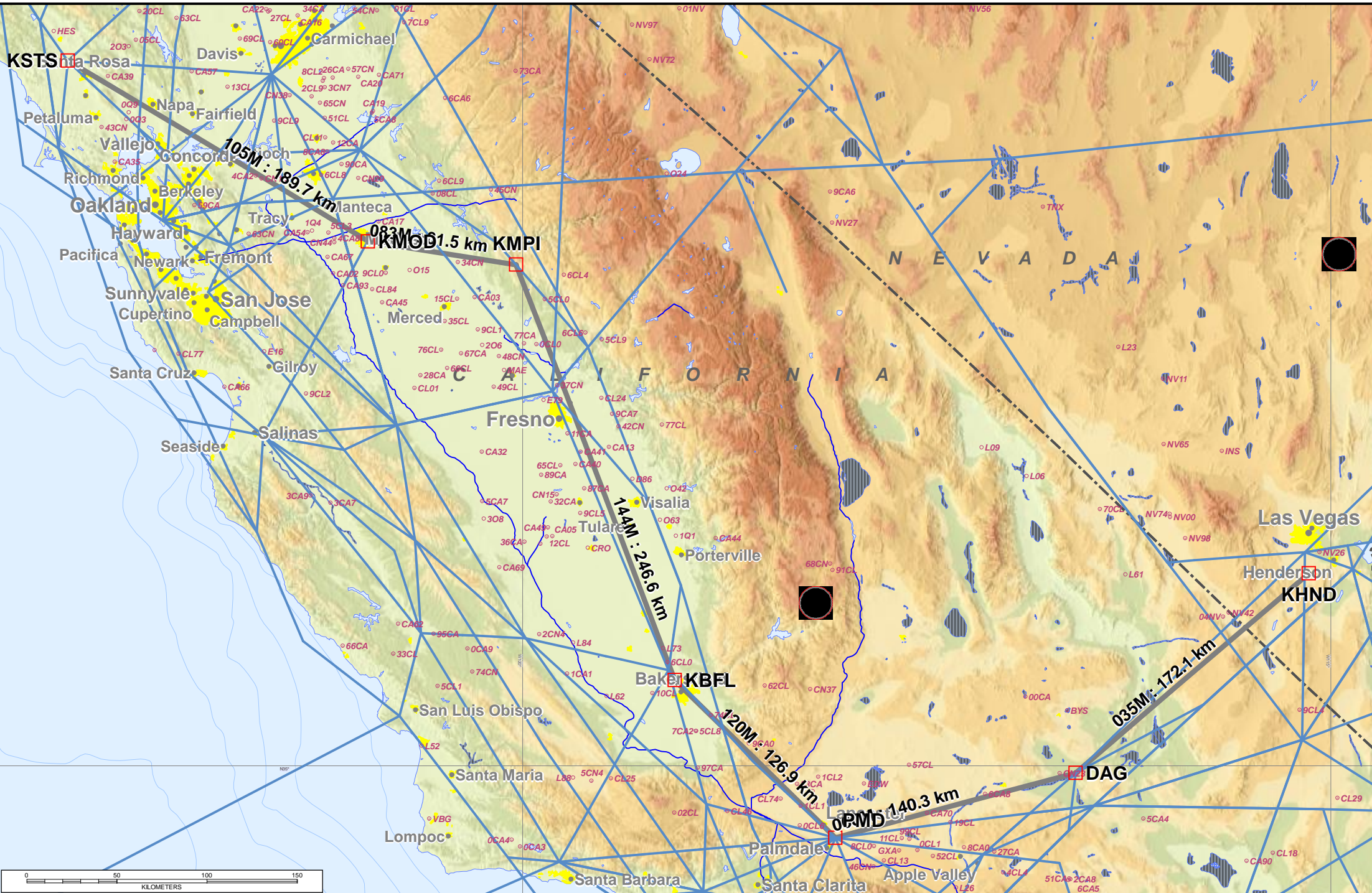
# KSTS -> KHND - Overview

NavData Cycle 2012-3 Expired: Thursday, 05 April 2012.

Scale: 1:2602220 (1 inch = 35.73 naut mi). Printed on 20 Apr 2012 at 04:20PM.

**JEPPesen**

FliteMap 9.5.5.0





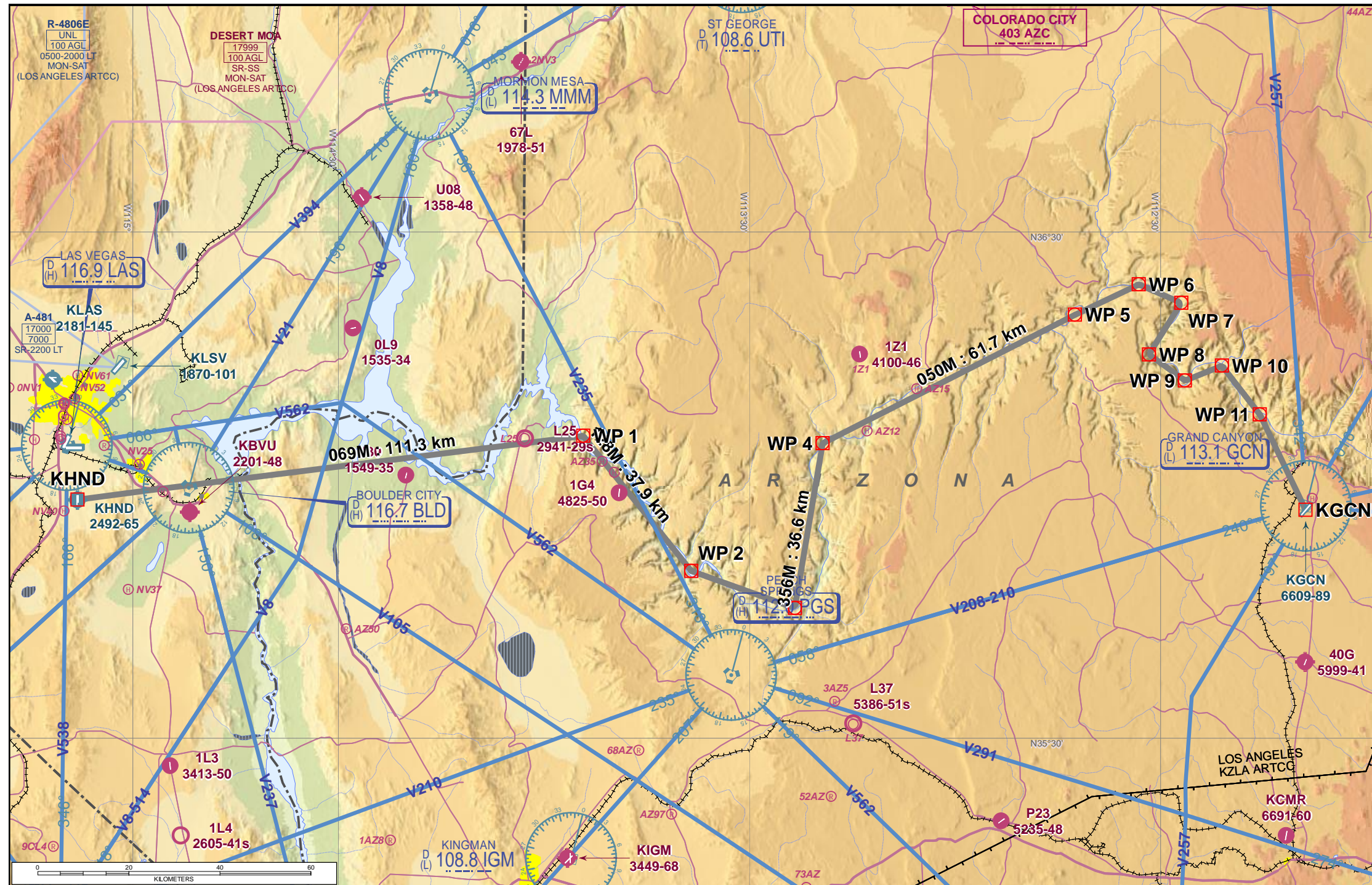
# KHND -> KGCN - Overview

NavData Cycle 2012-3 Expired: Thursday, 05 April 2012.

Scale: 1:1018999 (1 inch = 13.99 naut mi). Printed on 20 Apr 2012 at 04:20PM.

**JEPPesen**

FliteMap 9.5.5.0





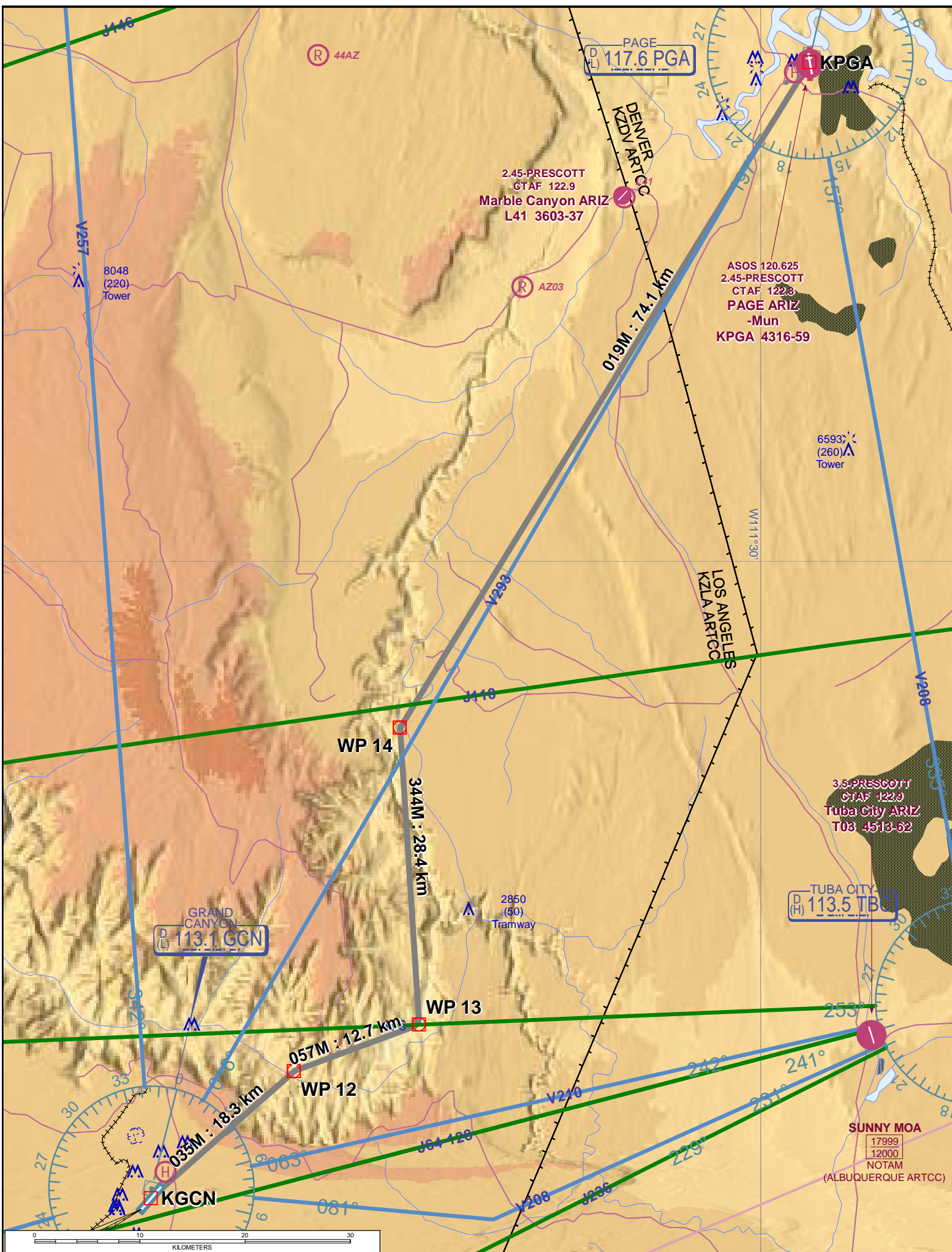
# KGCN -> KPGA - Overview

NavData Cycle 2012-3 Expired: Thursday, 05 April 2012.

Scale: 1:439958 (1 inch = 6.04 naut mi). Printed on 20 Apr 2012 at 04:20PM.

**JEPPesen**

**FliteMap 9.5.5.0**



**Scale: 1:439958 (1 inch = 6.04 naut mi). Printed on 20 Apr 2012 at 04:20PM.**

## FliteMap 9.5.5.0

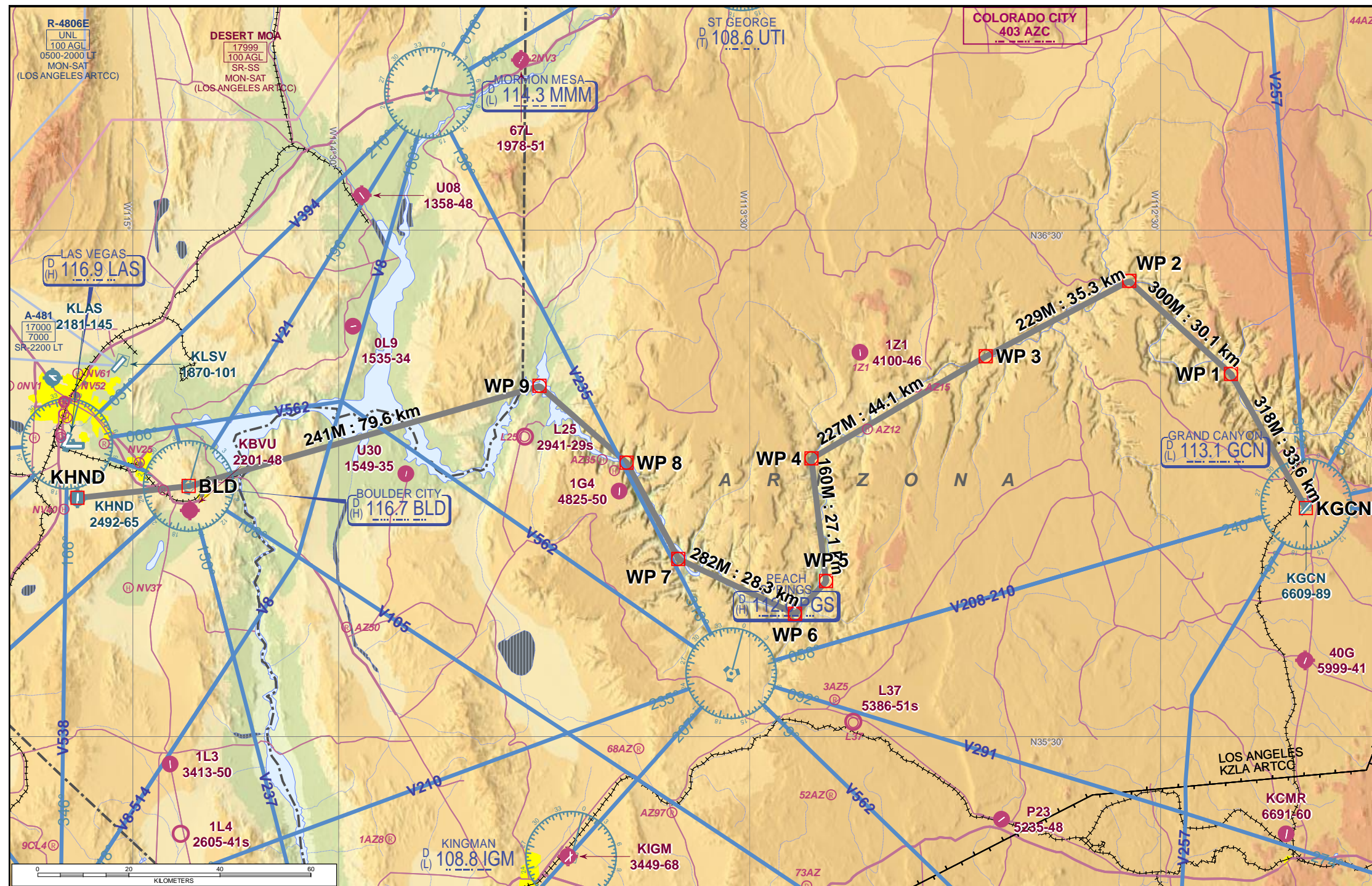




**JEPPESEN**

### FliteMap 9.5.5.0

© JEPPESEN SANDBERSON, INC., 2012. ALL RIGHTS RESERVED.





# KHND -> KPSP - Overview

NavData Cycle 2012-3 Expired: Thursday, 05 April 2012.

Scale: 1:1000182 (1 inch = 13.73 naut mi). Printed on 20 Apr 2012 at 04:20PM.

**JEPPesen**

**FliteMap 9.5.5.0**





